

12/22/2022 4:00 PM

# ARCADIA INC.

## SERIES IP1900 CURTAIN WALL SYSTEM (IMPACT)



ARCADIA, INC.  
2301 East Vernon Ave.  
Vernon, CA 90058  
(323)771-9819

### INSTALLATION NOTES:

- ONE (1) INSTALLATION ANCHOR IS REQUIRED AT EACH ANCHOR LOCATION SHOWN, UNLESS OTHERWISE STATED.
- THE NUMBER OF INSTALLATION ANCHORS DEPICTED IS THE MINIMUM NUMBERS OF ANCHORS TO BE USED FOR PRODUCT INSTALLATION.
- INSTALL INDIVIDUAL INSTALLATION ANCHORS WITHIN A TOLERANCE OF  $\pm 1/2$  INCH OF THE DEPICTED LOCATION IN THE ANCHOR LAYOUT DETAIL (I.E., WITH OUT CONSIDERATION OF TOLERANCE). TOLERANCE ARE NOT CUMULATIVE FROM ONE INSTALLATION ANCHOR TO THE NEXT.
- REFER TO SECTION 6 & 7 FOR ANCHOR TYPE, SUBSTRATE STRENGTH, EMBEDMENT, & EDGE DISTANCE REQUIREMENTS. FOLLOW MANUFACTURER INSTALLATION INSTRUCTIONS FOR INSTALLATION OF ANCHORS.
- MINIMUM EMBEDMENT AND EDGE DISTANCE EXCLUDE WALL FINISHES, INCLUDING BUT NOT LIMITED TO STUCCO, FOAM, BRICK VENEER, AND SIDING.
- INSTALLATION ANCHORS AND ASSOCIATED HARDWARE MUST BE MADE OF CORROSION RESISTANT MATERIAL OR HAVE A CORROSION RESISTANT COATING.
- INSTALLATION ANCHORS SHALL BE INSTALLED IN ACCORDANCE WITH ANCHOR MANUFACTURER'S INSTALLATION INSTRUCTIONS, AND ANCHORS SHALL NOT BE USED IN SUBSTRATES WITH STRENGTHS LESS THAN THE MINIMUM STRENGTH SPECIFIED BY THE ANCHOR MANUFACTURER. ADHESIVE ANCHORS MUST BE INSTALLED BY PERSONNEL CERTIFIED FOR THE SPECIFIED ANCHOR INSTALLATION.

### INSTRUCTIONS:

USE CHARTS AS FOLLOW

- DETERMINE DESIGN WIND LOAD REQUIREMENT BASED ON WIND VELOCITY, BLDG. HEIGHT, WIND ZONE USING APPLICABLE ASCE 7 STANDARD.
- SEE CHARTS ON SECTION 5 FOR DESIGN LOAD CAPACITY OF DESIRED GLASS SIZE.
- CHECK MULLION CAPACITY FOR A GIVEN SPACING, HEIGHT, SINGLE SPAN, TWIN SPAN, MULTIPLE SPANS AND CORNERS ON SECTION 3 & 4.
- USING HEAD/SILL ANCHOR DETAILS, SELECT ANCHOR OPTION FROM TABLES ON SECTION 6 & 7 WITH DESIGN RATING MORE THAN DESIGN LOAD SPECIFIED IN STEP 1 ABOVE.
- CHECK INTERMEDIATE ANCHOR CAPACITY FOR MULTIPLE SPANS USING CHARTS OR DETAILS ON SECTION 7.
- THE LOWEST VALUE RESULTING FROM STEPS 2, 3, 4 AND 5 SHALL APPLY TO ENTIRE SYSTEM.

### GENERAL NOTES:

- THE PRODUCT SHOWN HEREIN IS DESIGNED AND MANUFACTURED TO COMPLY WITH THE 2018 INTERNATIONAL BUILDING CODE (IBC) AND INTERNATIONAL RESIDENTIAL CODE (IRC) AND HAS BEEN EVALUATED ACCORDING TO THE FOLLOWING:
  - ASTM E1886-13
  - ASTM E1996-17
  - ASTM E283-04(2012)
  - ASTM E330-14
  - ASTM 331-00(2009)
  - AAMA 501-15
- ADEQUACY OF THE EXISTING STRUCTURAL CONCRETE/MASONRY, 2X AND STEEL STUD FRAMING AS A MAIN WIND FORCE RESISTING SYSTEM CAPABLE OF WITHSTANDING AND TRANSFERRING APPLIED PRODUCT LOADS TO THE FOUNDATION IS THE RESPONSIBILITY OF THE ENGINEER OR ARCHITECT OF RECORD FOR THE PROJECT OF INSTALLATION.
- 2X BUCKS (WHEN USED) SHALL BE DESIGNED AND ANCHORED TO PROPERLY TRANSFER ALL LOADS TO THE STRUCTURE. BUCK DESIGN AND THE INSTALLATION IS THE RESPONSIBILITY OF THE ENGINEER OR ARCHITECT OF RECORD FOR THE PROJECT OF INSTALLATION.
- THE INSTALLATION DETAILS DESCRIBED HEREIN ARE GENERIC AND MAY NOT REFLECT ACTUAL CONDITIONS FOR A SPECIFIC SITE. IF SITE CONDITION CAUSE INSTALLATION TO DEVIATE FROM THE REQUIREMENTS DETAILED HEREIN, A LICENSED ENGINEER OR ARCHITECT SHALL PREPARE SITE SPECIFIC DOCUMENTS FOR USE WITH THIS DOCUMENT.
- APPROVED IMPACT PROTECTIVE SYSTEM **IS NOT REQUIRED** ON THIS PRODUCT IN AREAS REQUIRING IMPACT RESISTANCE.
- MATERIALS INCLUDING BUT NOT LIMITED TO STEEL/METAL SCREWS, THAT COME INTO CONTACT WITH OTHER DISSIMILAR MATERIALS SHALL MEET THE REQUIREMENTS OF THE 2018 IBC AND IRC.

TABLE OF CONTENTS	
SECTION	SECTION DESCRIPTION
1	COVER SHEET & GENERAL NOTES
2	ELEVATION
3	VERTICAL SECTIONS
4	HORIZONTAL SECTIONS
5	GLAZING DETAILS
6	ANCHOR DETAILS
7	WIND LOAD ANCHOR DETAILS
8	COMPONENTS & BILL OF MATERIALS

TITLE: IP1900 CURTAIN WALL SYSTEM (IMPACT)  
COVER SHEET & GENERAL NOTES

PREPARED BY: BUILDING DROPS, INC.  
398 E. DANIA BEACH BLVD., STE. 338  
DANIA BEACH, FL 33004  
PH: (954)399-8478  
FAX: (954)744-4738  
WEB: www.buildingdrops.com



REMARKS	BY	DATE

THE INSTALLATION DETAILS DESCRIBED HEREIN ARE GENERIC AND MAY NOT REFLECT ACTUAL CONDITIONS FOR A SPECIFIC SITE. IF SITE CONDITIONS CAUSE INSTALLATION TO DEVIATE FROM THE REQUIREMENTS DETAILED HEREIN, A LICENSED ENGINEER OR ARCHITECT SHALL PREPARE SITE SPECIFIC DOCUMENTS FOR USE WITH THIS DOCUMENT



HERMES F. NORERO, P.E.  
TEXAS P.E. No 118471  
BUILDING DROPS, INC  
398 E. DANIA BEACH BLVD. # 338  
DANIA BEACH, FL 33004  
TBPE FIRM No. 13734

DATE: 05.10.22

DWG. BY: SH  
CHK. BY: HFN

SCALE: NTS

DWG. #: ARC008

SECTION:

1.0

s:\projects\arcadia\_incl\tdi-22-0358.1 - rdi submittal - ip1900 curtainwall system.dwg

s:\projects\arcadia, inc\tdi-22-0358.1 - rdi submittal - ip1900 storefront system and ip1900 curtainwall system.dwg ip1900 - curtain wall\arc008.dwg 12/22/2022 4:00 PM



ARCADIA, INC.  
2301 East Vernon Ave.  
Vernon, CA 90058  
(323)771-9819

TITLE: IP1900 CURTAIN WALL SYSTEM (IMPACT) ELEVATIONS

PREPARED BY: BUILDING DROPS, INC.  
398 E. DANIA BEACH BLVD., STE. 338  
DANIA BEACH, FL 33004  
PH: (954)399-8478  
FAX: (954)744-4738  
WEB: www.buildingdrops.com



REMARKS	BY	DATE

THE INSTALLATION DETAILS DESCRIBED HEREIN ARE GENERIC AND MAY NOT REFLECT ACTUAL CONDITIONS FOR A SPECIFIC SITE. IF SITE CONDITIONS CAUSE INSTALLATION TO DEVIATE FROM THE REQUIREMENTS DETAILED HEREIN, A LICENSED ENGINEER OR ARCHITECT SHALL PREPARE SITE SPECIFIC DOCUMENTS FOR USE WITH THIS DOCUMENT



HERMES F. NORERO, P.E.  
TEXAS P.E. No. 118471  
BUILDING DROPS, INC  
398 E. DANIA BEACH BLVD. # 338  
DANIA BEACH, FL 33004  
TBPE FIRM No. 13734

DATE: 05.10.22

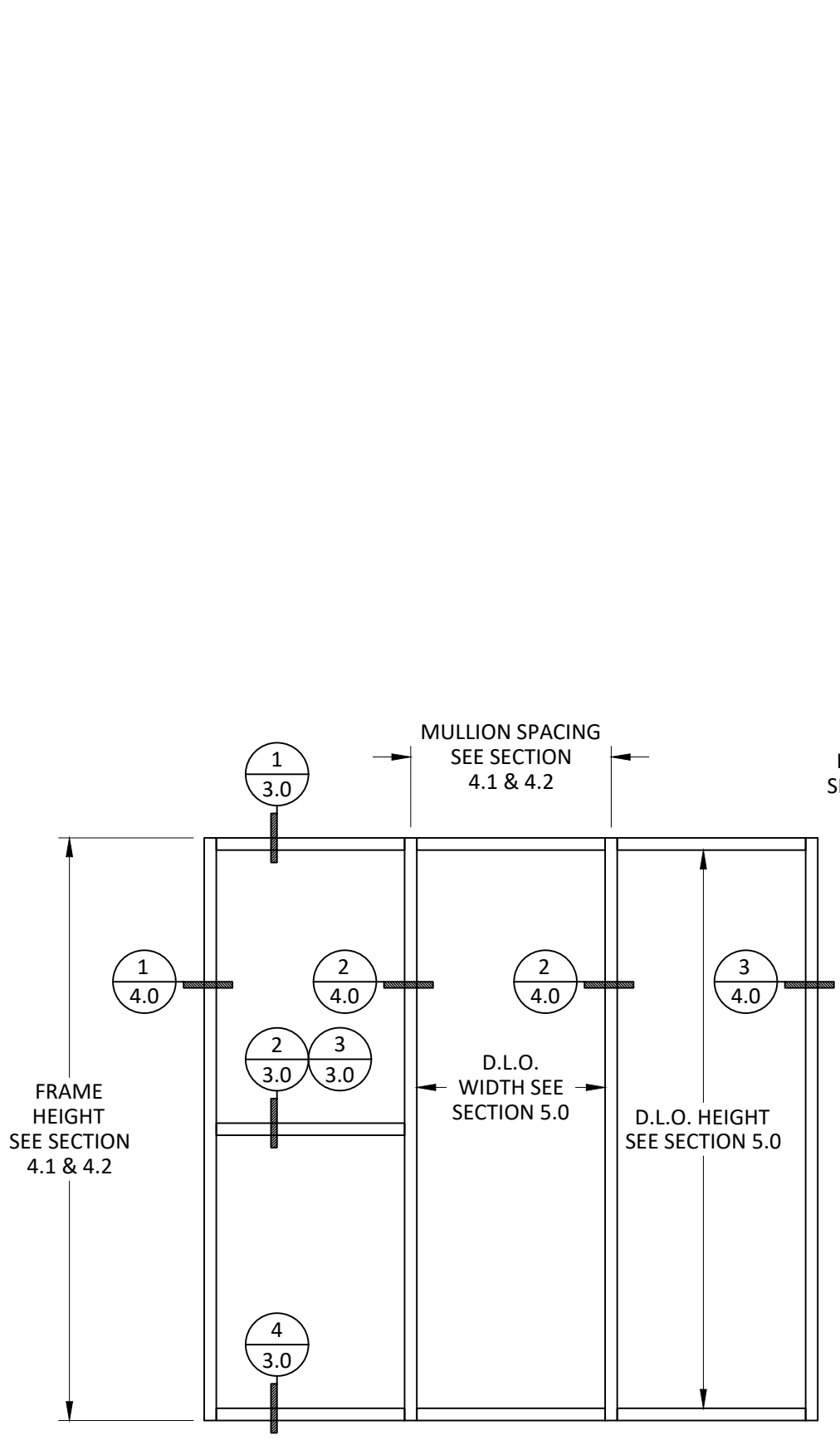
DWG. BY: SH      CHK. BY: HFN

SCALE: NTS

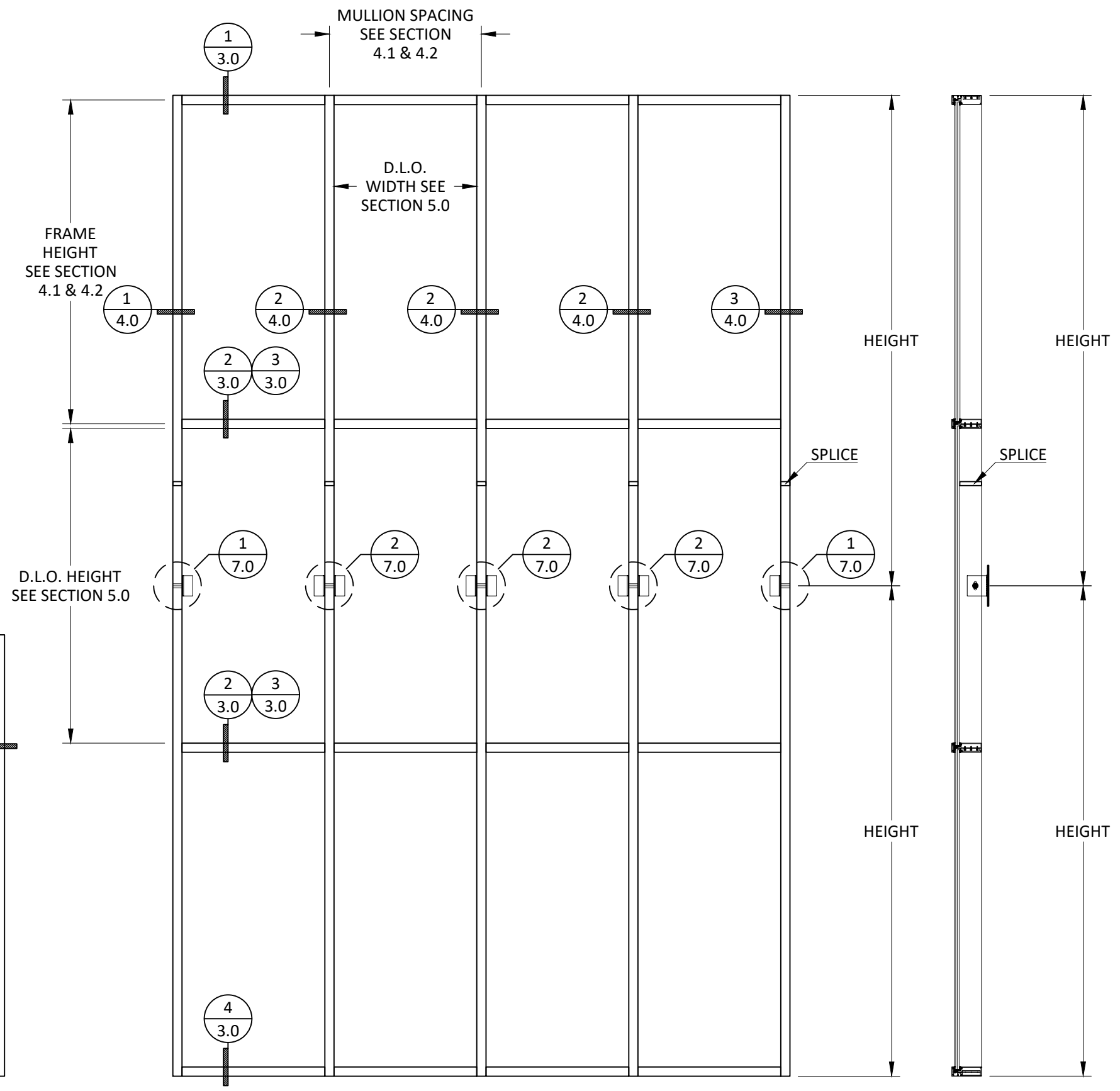
DWG. #: ARC008

SECTION:

2.0

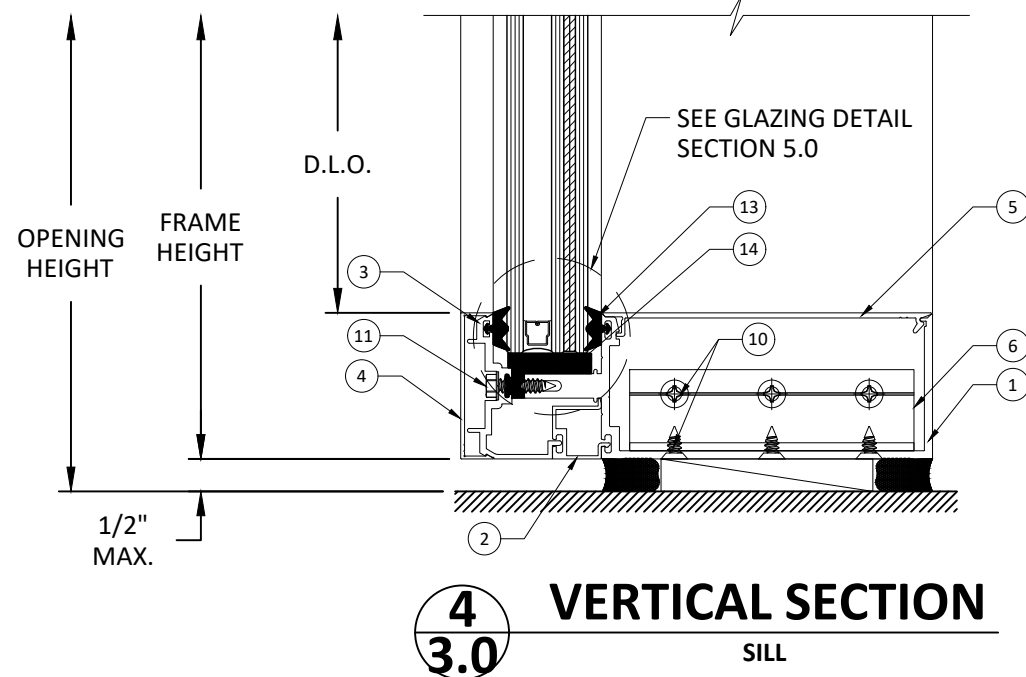
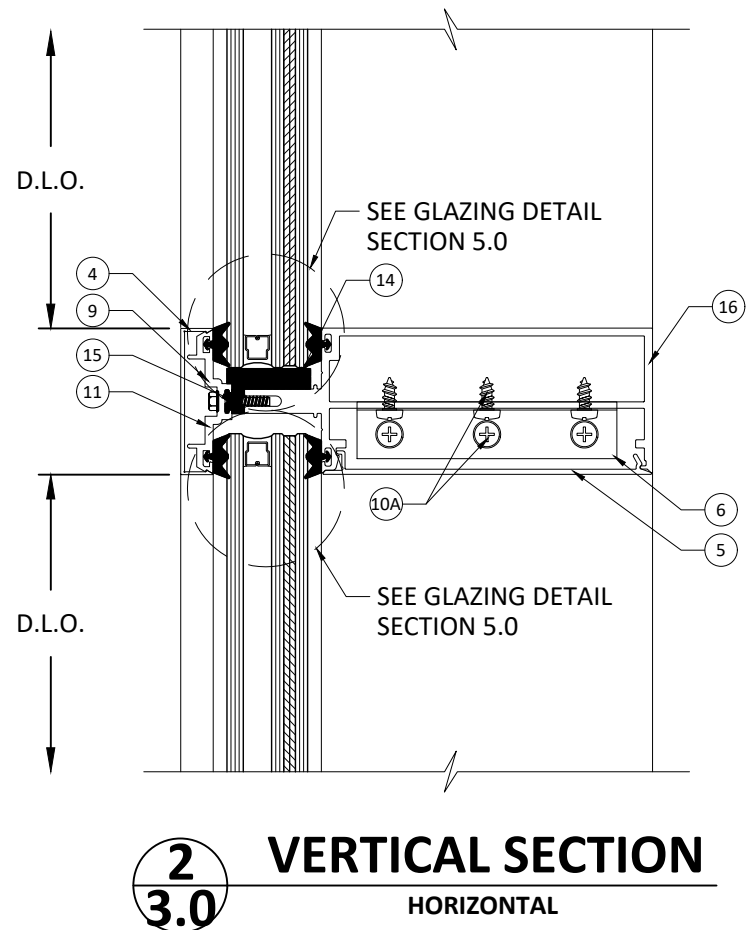
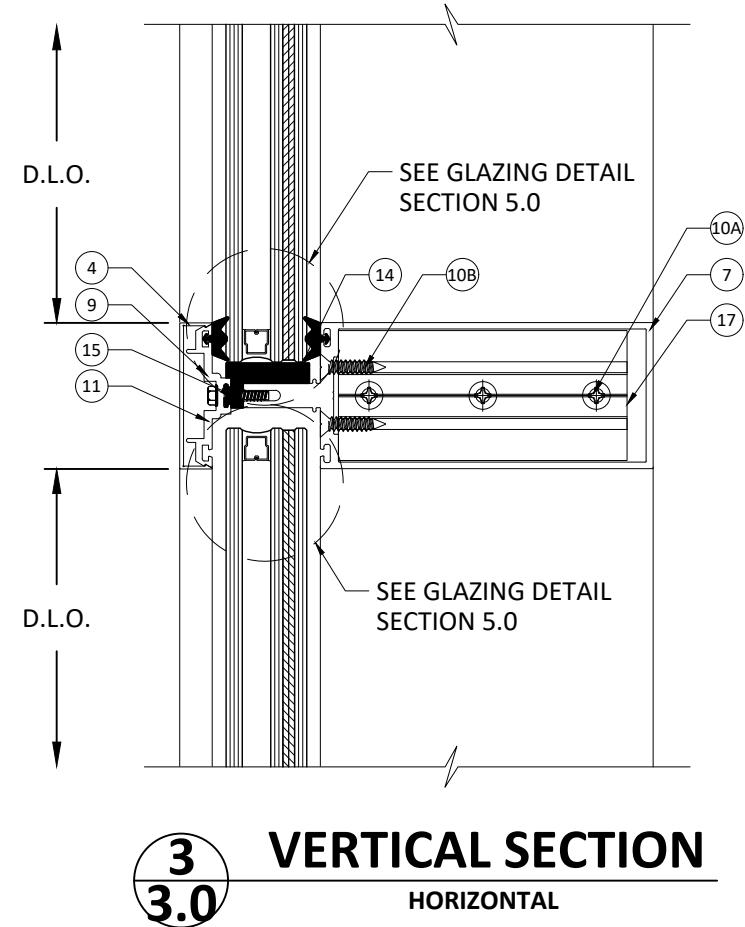
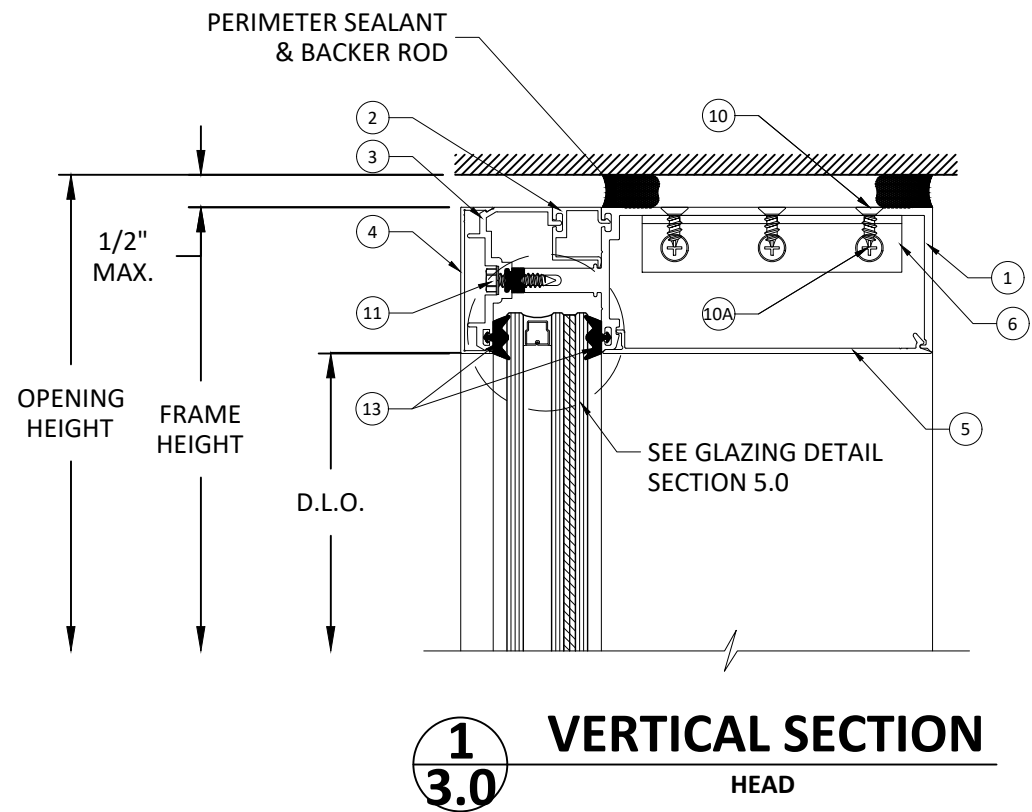


**ELEVATION**  
SINGLE SPAN



**ELEVATION**  
TWIN SPAN

s:\projects\arcadia\_incl\tdi-22-0358.1 - rdi\_submittal - ip1900\_curtainwall\_system.dwg; ip1900 - curtain wall\arc008.dwg



ARCADIA, INC.  
2301 East Vernon Ave.  
Vernon, CA 90058  
(323)771-9819

TITLE: IP1900 CURTAIN WALL SYSTEM (IMPACT) VERTICAL SECTIONS

PREPARED BY: BUILDING DROPS, INC.  
398 E. DANIA BEACH BLVD., STE. 338  
DANIA BEACH, FL 33004  
PH: (954)399-8478  
FAX: (954)744-4738  
WEB: www.buildingdrops.com

REMARKS	BY	DATE

THE INSTALLATION DETAILS DESCRIBED HEREIN ARE GENERIC AND MAY NOT REFLECT ACTUAL CONDITIONS FOR A SPECIFIC SITE. IF SITE CONDITIONS CAUSE INSTALLATION TO DEVIATE FROM THE REQUIREMENTS DETAILED HEREIN, A LICENSED ENGINEER OR ARCHITECT SHALL PREPARE SITE SPECIFIC DOCUMENTS FOR USE WITH THIS DOCUMENT



HERMES F. NORERO, P.E.  
TEXAS P.E. No. 118471  
BUILDING DROPS, INC  
398 E. DANIA BEACH BLVD. # 338  
DANIA BEACH, FL 33004  
TBPE FIRM No. 13734

DATE:	05.10.22
DWG. BY:	SH
CHK. BY:	HFN
SCALE:	NTS
DWG. #:	ARC008

SECTION: 3.0  
Page 3 of 14

s:\projects\arcadia\_incl\tdi-22-0358.1 - rdi submittal - ip1900 curtainwall system.dwg; ip1900 - curtain wall\arc008.dwg



ARCADIA, INC.  
2301 East Vernon Ave.  
Vernon, CA 90058  
(323)771-9819

TITLE: IP1900 CURTAIN WALL SYSTEM (IMPACT) HORIZONTAL SECTIONS

PREPARED BY: BUILDING DROPS, INC.  
398 E. DANIA BEACH BLVD., STE. 338  
DANIA BEACH, FL 33004  
PH: (954)399-8478  
FAX: (954)744-4738  
WEB: www.buildingdrops.com



REMARKS	BY	DATE

THE INSTALLATION DETAILS DESCRIBED HEREIN ARE GENERIC AND MAY NOT REFLECT ACTUAL CONDITIONS FOR A SPECIFIC SITE. IF SITE CONDITIONS CAUSE INSTALLATION TO DEVIATE FROM THE REQUIREMENTS DETAILED HEREIN, A LICENSED ENGINEER OR ARCHITECT SHALL PREPARE SITE SPECIFIC DOCUMENTS FOR USE WITH THIS DOCUMENT



HERMES F. NORERO, P.E.  
TEXAS P.E. No. 118471  
BUILDING DROPS, INC  
398 E. DANIA BEACH BLVD. # 338  
DANIA BEACH, FL 33004  
TBPE FIRM No. 13734

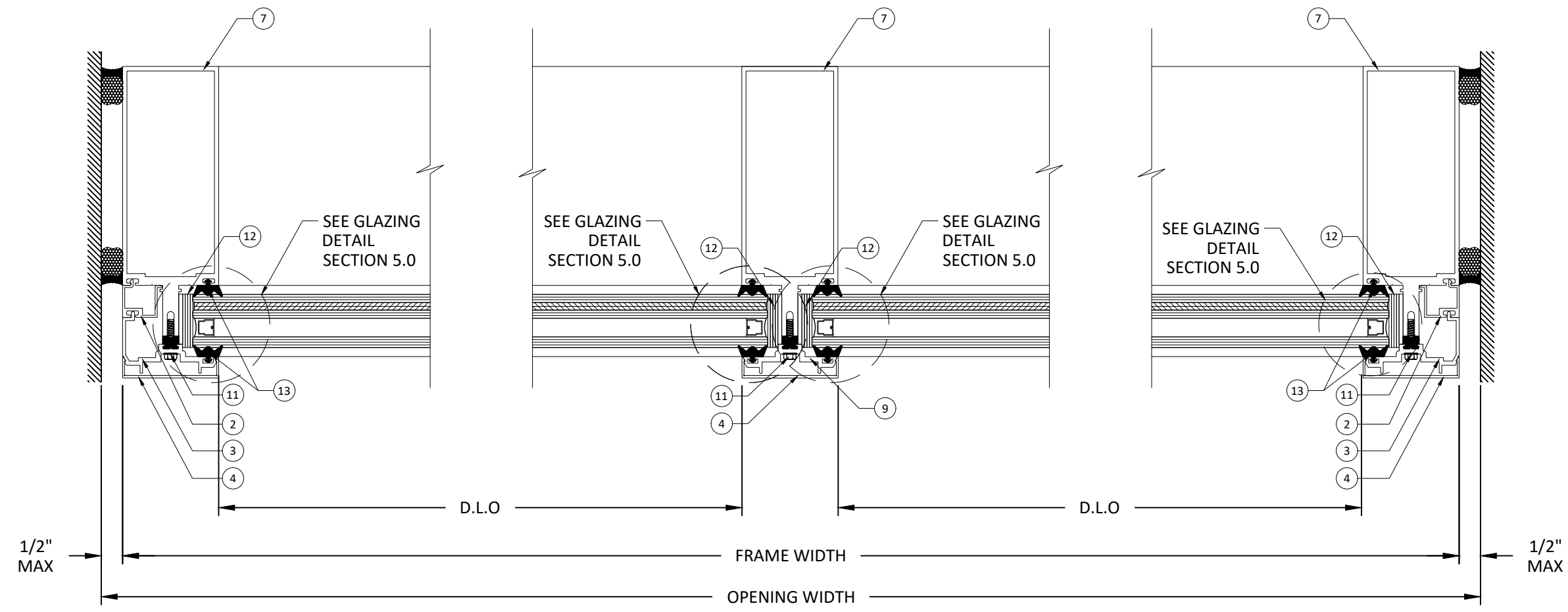
DATE: 05.10.22

DWG. BY: SH      CHK. BY: HFN

SCALE: NTS

DWG. #: ARC008

SECTION: 4.0



**1** HORIZONTAL SECTION  
**4.0** JAMB

**2** HORIZONTAL SECTION  
**4.0** MULLION

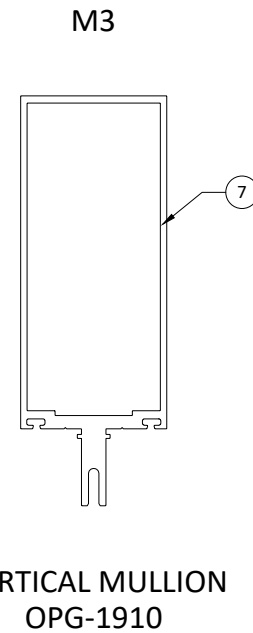
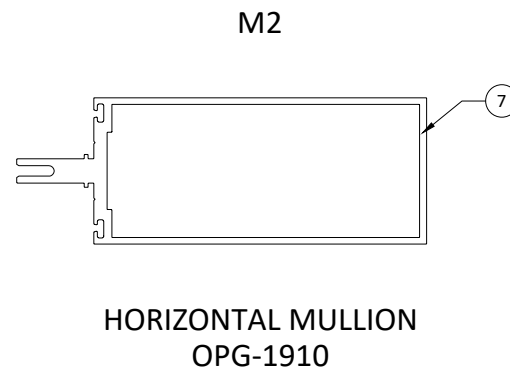
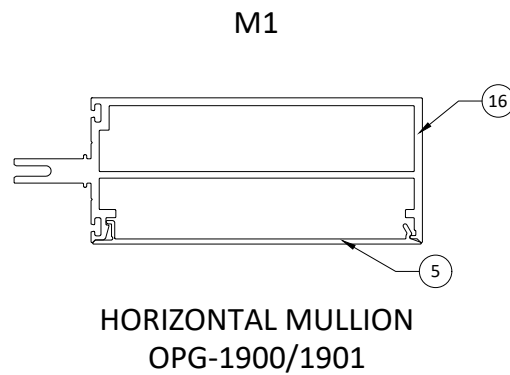
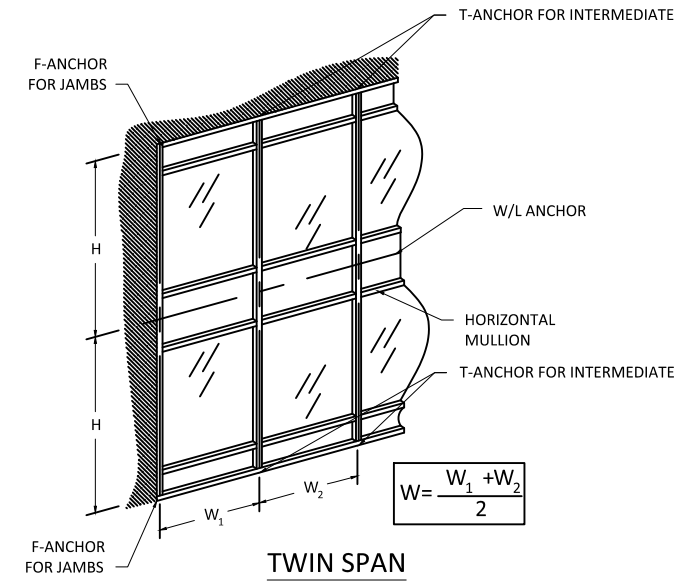
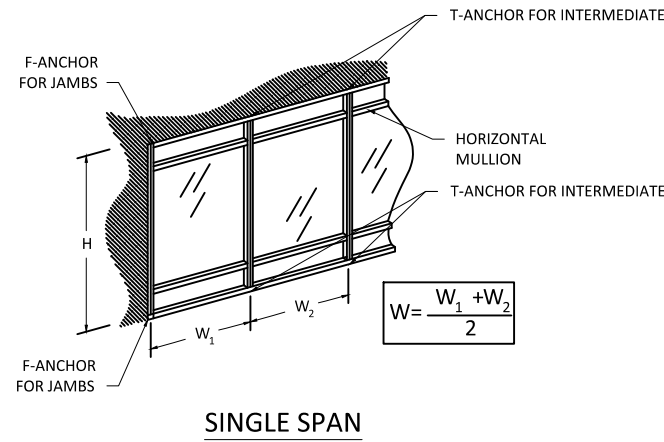
**3** HORIZONTAL SECTION  
**4.0** JAMB

# MULLION CAPACITY CHARTS

**NOTES:**

- DESIGN PRESSURES ARE LIMITED BY THE MULLION FIBERSTRESS AND DEFLECTION CAPACITY PER THE 2018 IBC AND IRC SPECIFICATIONS.
- SELECT DESIGN PRESSURE AND PANEL WIDTH (W) AND OBTAIN THE MAXIMUM ALLOWABLE DESIGN PRESSURE FOR MULLION.
- FOR HORIZONTAL MULLIONS CAPACITY, SEE HORIZONTAL MULLION CHART.
- WHEN PANEL WIDTHS ARE NOT EQUAL, USE THE AVERAGE WIDTH FROM THE CHART.

REFER TO SECTION 4.1 & 4.2 FOR MULLION CAPACITY TABLE.



DESIGN PRESSURE TABLE (PSF) - HORIZONTAL MULLION			
BAY HEIGHT (IN)	SPAN LENGTH (IN)	M1 & M2	
		EXT. (+)	INT. (-)
96	36	50.0	50.0
96	39	50.0	50.0
96	42	50.0	50.0
96	45	50.0	50.0
96	48	50.0	50.0



ARCADIA, INC.  
2301 East Vernon Ave.  
Vernon, CA 90058  
(323)771-9819

TITLE: IP1900 CURTAIN WALL SYSTEM (IMPACT) MULLION CAPACITY CHARTS

PREPARED BY: BUILDING DROPS, INC.  
398 E. DANIA BEACH BLVD., STE. 338  
DANIA BEACH, FL 33004  
PH: (954)399-8478  
FAX: (954)744-4738  
WEB: www.buildingdrops.com



REMARKS	BY	DATE

THE INSTALLATION DETAILS DESCRIBED HEREIN ARE GENERIC AND MAY NOT REFLECT ACTUAL CONDITIONS FOR A SPECIFIC SITE. IF SITE CONDITIONS CAUSE INSTALLATION TO DEVIATE FROM THE REQUIREMENTS DETAILED HEREIN, A LICENSED ENGINEER OR ARCHITECT SHALL PREPARE SITE SPECIFIC DOCUMENTS FOR USE WITH THIS DOCUMENT



HERMES F. NORERO, P.E.  
TEXAS P.E. No. 118471  
BUILDING DROPS, INC  
398 E. DANIA BEACH BLVD. # 338  
DANIA BEACH, FL 33004  
TBPE FIRM No. 13734

DATE: 05.10.22  
DWG. BY: SH      CHK. BY: HFN  
SCALE: NTS  
DWG. #: ARC008

SECTION: 4.1  
Page 5 of 14



# VERTICAL MULLION CAPACITY CHARTS



ARCADIA, INC.  
2301 East Vernon Ave.  
Vernon, CA 90058  
(323)771-9819

DESIGN PRESSURE TABLE (PSF) - SINGLE SPAN		
TRIBUTARY WIDTH (IN)	SPAN HEIGHT (IN)	M3
		EXT. (+) INT. (-)
36	72	50.0
42		50.0
48		50.0
54		50.0
60		50.0
66		50.0
72	50.0	
36	78	50.0
42		50.0
48		50.0
54		50.0
60		50.0
66		50.0
72	50.0	
36	84	50.0
42		50.0
48		50.0
54		50.0
60		50.0
66		50.0
72	50.0	
36	90	50.0
42		50.0
48		50.0
54		50.0
60		50.0
66		50.0
72	50.0	
36	96	50.0
42		50.0
48		50.0
54		50.0
60		50.0
66		50.0
72	50.0	
36	102	50.0
42		50.0
48		50.0
54		50.0
60		50.0
66		50.0

DESIGN PRESSURE TABLE (PSF) - SINGLE SPAN		
TRIBUTARY WIDTH (IN)	SPAN HEIGHT (IN)	M3
		EXT. (+) INT. (-)
36	108	50.0
42		50.0
48		50.0
54		50.0
60		50.0
66		50.0
72	50.0	
36	114	50.0
42		50.0
48		50.0
54		50.0
60	50.0	
36	120	50.0
42		50.0
48		50.0
54		50.0
60	50.0	
36	126	50.0
42		50.0
48		50.0
54		49.6
60	50.0	
36	132	50.0
42		50.0
48		48.5
54		50.0
60	50.0	
36	138	50.0
42		48.5
48		42.4
54		49.8
60	50.0	
36	144	42.7
42		37.3
48		44.1
54		37.8
60	39.2	
36	150	33.6
42		
48		
54		
60		
66		

DESIGN PRESSURE TABLE (PSF) - TWIN SPAN		
TRIBUTARY WIDTH (IN)	SPAN HEIGHT (IN)	M3
		EXT. (+) INT. (-)
36	72	50.0
42		50.0
48		50.0
54		50.0
60		50.0
66		50.0
72	50.0	
36	78	50.0
42		50.0
48		50.0
54		50.0
60		50.0
66		50.0
72	50.0	
36	84	50.0
42		50.0
48		50.0
54		50.0
60		50.0
66		50.0
72	50.0	
36	90	50.0
42		50.0
48		50.0
54		50.0
60		50.0
66		50.0
72	50.0	
36	96	50.0
42		50.0
48		50.0
54		50.0
60		50.0
66		50.0
72	50.0	
36	102	50.0
42		50.0
48		50.0
54		50.0
60		50.0
66		50.0

DESIGN PRESSURE TABLE (PSF) - TWIN SPAN		
TRIBUTARY WIDTH (IN)	SPAN HEIGHT (IN)	M3
		EXT. (+) INT. (-)
36	108	50.0
42		50.0
48		50.0
54		50.0
60		50.0
66		50.0
72	50.0	
36	114	50.0
42		50.0
48		50.0
54		50.0
60		50.0
66		50.0
72	50.0	
36	120	50.0
42		50.0
48		50.0
54		50.0
60		50.0
66		50.0
72	50.0	
36	126	50.0
42		50.0
48		50.0
54		50.0
60		50.0
66		50.0
72	50.0	
36	132	50.0
42		50.0
48		50.0
54		50.0
60		50.0
66		50.0
72	50.0	
36	138	50.0
42		50.0
48		50.0
54		50.0
60		50.0
66		50.0
72	50.0	
36	144	50.0
42		50.0
48		50.0
54		50.0
60		50.0
66		50.0
72	50.0	
36	150	50.0
42		50.0
48		50.0
54		50.0
60		50.0
66		50.0
72	50.0	
36	156	44.9
42		
48		
54		
60		
66		

TITLE: IP1900 CURTAIN WALL SYSTEM (IMPACT) MULLION CAPACITY CHARTS

PREPARED BY: BUILDING DROPS, INC.  
398 E. DANIA BEACH BLVD., STE. 338  
DANIA BEACH, FL 33004  
PH: (954)399-8478  
FAX: (954)744-4738  
WEB: www.buildingdrops.com

REMARKS	BY	DATE

THE INSTALLATION DETAILS DESCRIBED HEREIN ARE GENERIC AND MAY NOT REFLECT ACTUAL CONDITIONS FOR A SPECIFIC SITE. IF SITE CONDITIONS CAUSE INSTALLATION TO DEVIATE FROM THE REQUIREMENTS DETAILED HEREIN, A LICENSED ENGINEER OR ARCHITECT SHALL PREPARE SITE SPECIFIC DOCUMENTS FOR USE WITH THIS DOCUMENT



HERMES F. NORERO, P.E.  
TEXAS P.E. No. 118471  
BUILDING DROPS, INC  
398 E. DANIA BEACH BLVD. # 338  
DANIA BEACH, FL 33004  
TBPE FIRM No. 13734

DATE: 05.10.22

DWG. BY: SH      CHK. BY: HFN

SCALE: NTS

DWG. #: ARC008

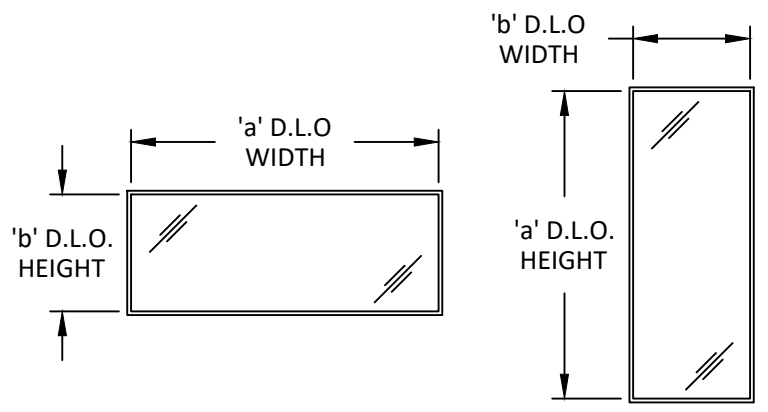
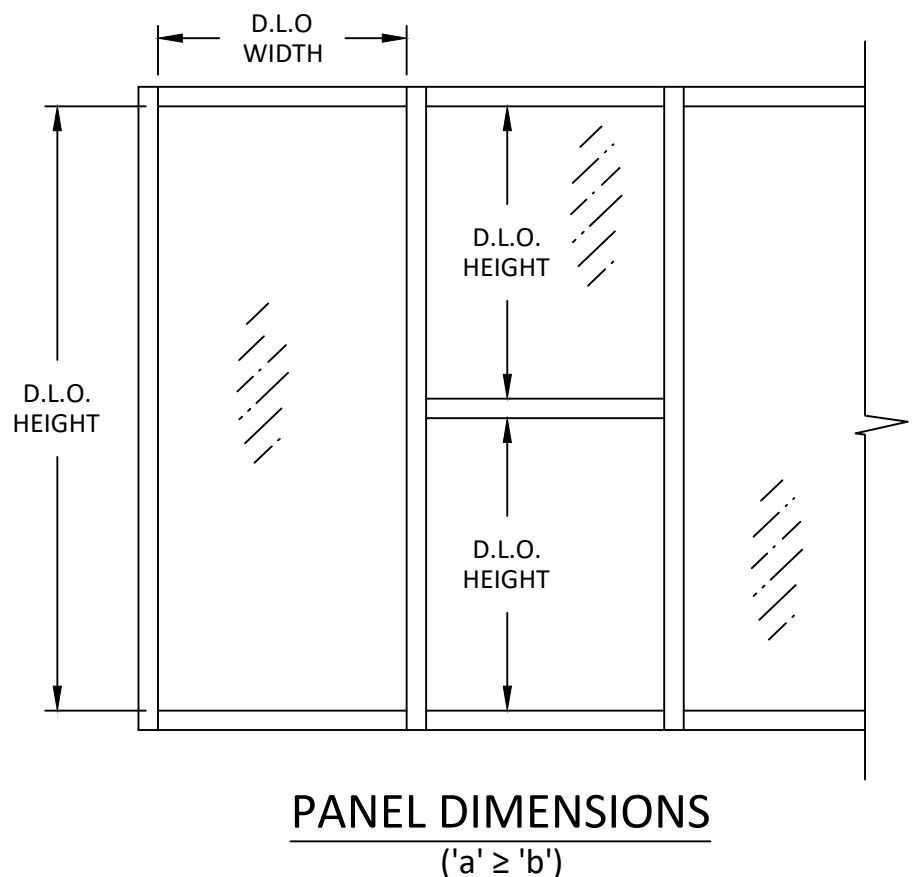
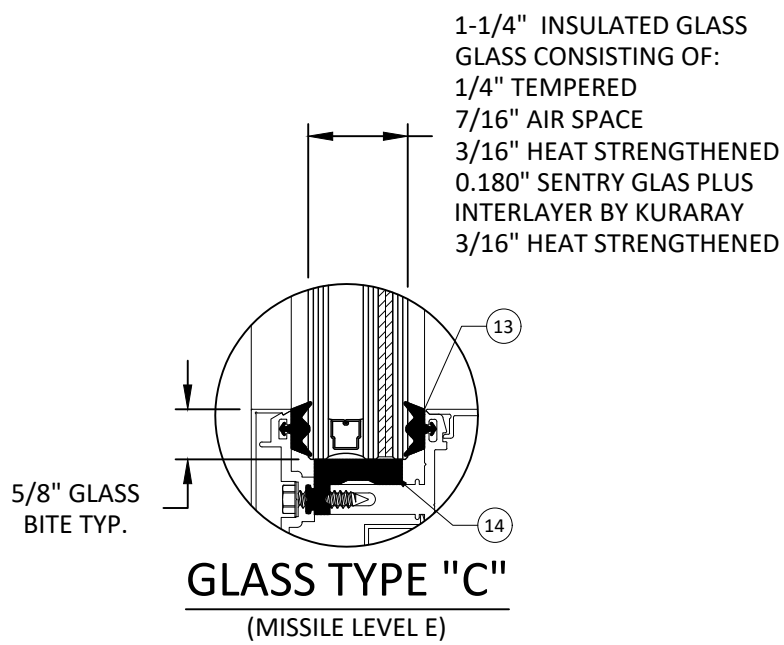
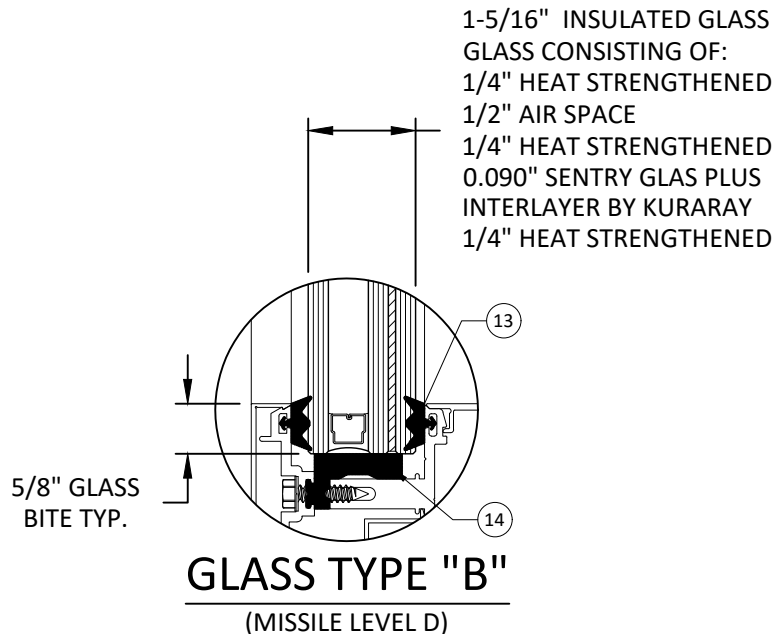
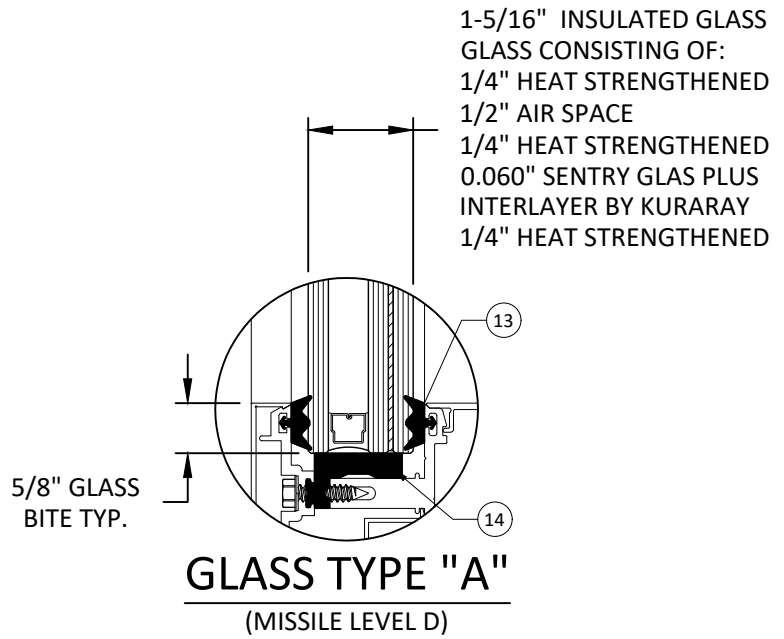
SECTION: 4.2

Page 6 of 14

s:\projects\arcadia\_incl\tdi-22-0358.1 - rdi submittal - iprcd70 storefront system and ip1900 curtain wall system.dwg; ip1900 - curtain wall\arc008.dwg

12/22/2022 4:00 PM

GLASS LOAD CAPACITY (PSF)				
NOMINAL DIMS.		GLASS TYPE 'A'	GLASS TYPE 'B'	GLASS TYPE 'C'
D.L.O. WIDTH 'a' (in.)	D.L.O. HEIGHT 'b' (in.)	EXT. (+) INT. (-)	EXT. (+) INT. (-)	EXT. (+) INT. (-)
30.0	55.5	50.0	50.0	50.0
36.0		50.0	50.0	50.0
42.0		50.0	50.0	50.0
48.0		50.0	50.0	50.0
54.0		50.0	50.0	50.0
57.8125		50.0	50.0	48.6
60.0	61.5	50.0	50.0	50.0
66.0		50.0	50.0	48.6
30.0		50.0	50.0	50.0
36.0		50.0	50.0	50.0
42.0		50.0	50.0	50.0
48.0		50.0	50.0	50.0
54.0	50.0	50.0	50.0	
57.8125	50.0	50.0	46.7	
60.0	67.5	48.2	48.2	45.0
66.0		47.0	47.0	43.9
30.0		50.0	50.0	50.0
36.0		50.0	50.0	50.0
42.0		50.0	50.0	50.0
48.0		50.0	50.0	50.0
54.0	50.0	50.0	50.0	
57.8125	50.0	50.0	46.7	
60.0	73.5	48.2	48.2	-
66.0		43.8	43.8	-
30.0		50.0	50.0	50.0
36.0		50.0	50.0	50.0
42.0		50.0	50.0	50.0
48.0		50.0	50.0	50.0
54.0	50.0	50.0	50.0	
57.8125	50.0	50.0	46.7	
60.0	79.5	48.2	48.2	-
66.0		43.8	43.8	-
30.0		50.0	50.0	50.0
36.0		50.0	50.0	50.0
42.0		50.0	50.0	50.0
48.0		50.0	50.0	50.0
54.0	50.0	50.0	50.0	
57.8125	50.0	50.0	-	
60.0	85.5	48.2	48.2	-
66.0		43.8	43.8	-
30.0		50.0	50.0	50.0
36.0		50.0	50.0	50.0
42.0		50.0	50.0	50.0
48.0		50.0	50.0	50.0
54.0	50.0	50.0	50.0	
57.8125	50.0	50.0	-	
60.0	91.5	50.0	50.0	50.0
66.0		50.0	50.0	50.0
30.0		50.0	50.0	50.0
36.0		50.0	50.0	50.0
42.0		50.0	50.0	50.0
48.0		50.0	50.0	50.0
54.0	50.0	50.0	50.0	
57.8125	50.0	50.0	-	
60.0	97.5	50.0	50.0	50.0
66.0		50.0	50.0	50.0
30.0		50.0	50.0	50.0
36.0		50.0	50.0	50.0
42.0		50.0	50.0	50.0
48.0		50.0	50.0	50.0
54.0	50.0	50.0	50.0	
57.8125	50.0	50.0	-	
60.0	103.5	50.0	50.0	50.0
66.0		50.0	50.0	50.0
30.0		50.0	50.0	50.0
36.0		50.0	50.0	50.0
42.0		50.0	50.0	50.0
48.0		50.0	50.0	50.0
54.0	50.0	50.0	50.0	
57.8125	50.0	50.0	-	
60.0	109.5	50.0	50.0	50.0
66.0		50.0	50.0	50.0
30.0		50.0	50.0	50.0
36.0		50.0	50.0	50.0
42.0		50.0	50.0	50.0
48.0		50.0	50.0	50.0
54.0	50.0	50.0	50.0	
57.8125	50.0	50.0	-	
60.0	115.5	50.0	50.0	50.0
66.0		50.0	50.0	50.0
30.0		50.0	50.0	50.0
36.0		50.0	50.0	50.0
42.0		50.0	50.0	50.0
48.0		50.0	50.0	50.0
54.0	50.0	50.0	50.0	
57.8125	50.0	50.0	-	
60.0	121.5	50.0	50.0	50.0
66.0		50.0	50.0	50.0
30.0		50.0	50.0	50.0
36.0		50.0	50.0	50.0
42.0	50.0	50.0	50.0	



- NOTE:**
- GLASS TYPE AND THICKNESS SHALL COMPLY WITH THE REQUIREMENTS OF ASTM E1300.
  - DO NOT EXCEED MULLION CAPACITY SELECTED OR ANCHOR CAPACITY IN DESIGN PRESSURE CHARTS
  - SETTING BLOCK DUROMETER HARDNESS OF 70-90 (SHORE A) AS REFERENCED IN CHAPTER 24 OF THE 2018 IBC.
  - SETTING BLOCKS TO BE LOCATED AT 1/4 SPAN LENGTH FOR GLASS WIDER THAN 36" AS PER CHAPTER 24 OF THE 2018 IBC.
  - D.L.O. MAY NOT EXCEED MAX DIMENSIONS IN GLASS CHARTS FOR GLASS TYPE.



ARCADIA, INC.  
 2301 East Vernon Ave.  
 Vernon, CA 90058  
 (323)771-9819

TITLE: IP1900 CURTAIN WALL SYSTEM (IMPACT) GLAZING DETAILS

PREPARED BY: BUILDING DROPS, INC.  
 398 E. DANIA BEACH BLVD., STE. 338  
 DANIA BEACH, FL 33004  
 PH: (954)399-8478  
 FAX: (954)744-4738  
 WEB: www.buildingdrops.com

REMARKS	BY	DATE

THE INSTALLATION DETAILS DESCRIBED HEREIN ARE GENERIC AND MAY NOT REFLECT ACTUAL CONDITIONS FOR A SPECIFIC SITE. IF SITE CONDITIONS CAUSE INSTALLATION TO DEVIATE FROM THE REQUIREMENTS DETAILED HEREIN, A LICENSED ENGINEER OR ARCHITECT SHALL PREPARE SITE SPECIFIC DOCUMENTS FOR USE WITH THIS DOCUMENT



HERMES F. NORERO, P.E.  
 TEXAS P.E. No. 118471  
 BUILDING DROPS, INC  
 398 E. DANIA BEACH BLVD. # 338  
 DANIA BEACH, FL 33004  
 TBPE FIRM No. 13734

DATE: 05.10.22

DWG. BY: SH      CHK. BY: HFN

SCALE: NTS

DWG. #: ARC008

SECTION:

5.0

# F & T ANCHORS

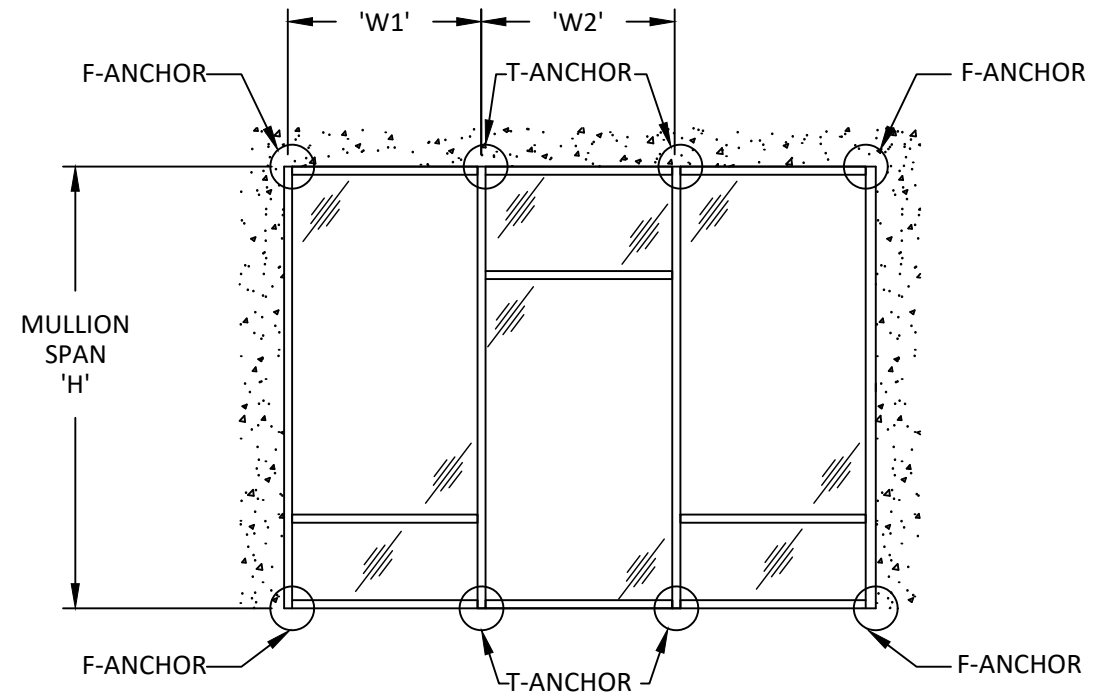
ANCHOR TYPE	ANCHOR DESCRIPTION	SUBSTRATE REQUIREMENTS	MIN. EMBEDMENT	MIN. EDGE DISTANCE
A	#14 WOOD SCREW	MIN. S.G. = 0.55 WOOD	1-1/2"	1"
B	1/4" SMS (GRADE 5)	STEEL: 18 GA. MIN., Fy=33 KSI MIN. ALUM.: 1/8" MIN., 6063-T5 MIN.	THREE THREADS PENETRATION	3/4"
C	3/8" MACHINE BOLT	STEEL: 1/8" MIN., Fy=33 KSI MIN. ALUM.: 1/4" MIN., 6063-T5 MIN.	THREE THREADS PENETRATION	3/4"
D	1/4" ITW TAPCON	CONCRETE, F'C = 2730 PSI MIN.	1"	2"
		C-90 HOLLOW/FILLED BLOCK, F'M = 2000 PSI MIN.	1"	2"
E	1/4" DEWALT UULTRACON+	CONCRETE, F'C = 2730 PSI MIN.	1-3/8"	2-1/2"
		C-90 HOLLOW/FILLED BLOCK, F'M = 1924 PSI MIN.	1-3/4"	2-1/2"
F	3/8" DEWALT POWER-BOLT+	CONCRETE, F'C = 2730 PSI MIN.	2"	3"

MULLION SPACING OR BAY WIDTH, 'W', FOR T-ANCHORS	$W = \frac{W1 + W2}{2}$
MULLION SPACING OR BAY WIDTH, 'W', FOR F-ANCHORS AT JAMBS	$W = W1$
MULLION SPACING OR BAY WIDTH, 'W', FOR F-ANCHORS AT VERTICAL MULL WITH DOORS	$W* = \frac{W1 + W2}{2}$

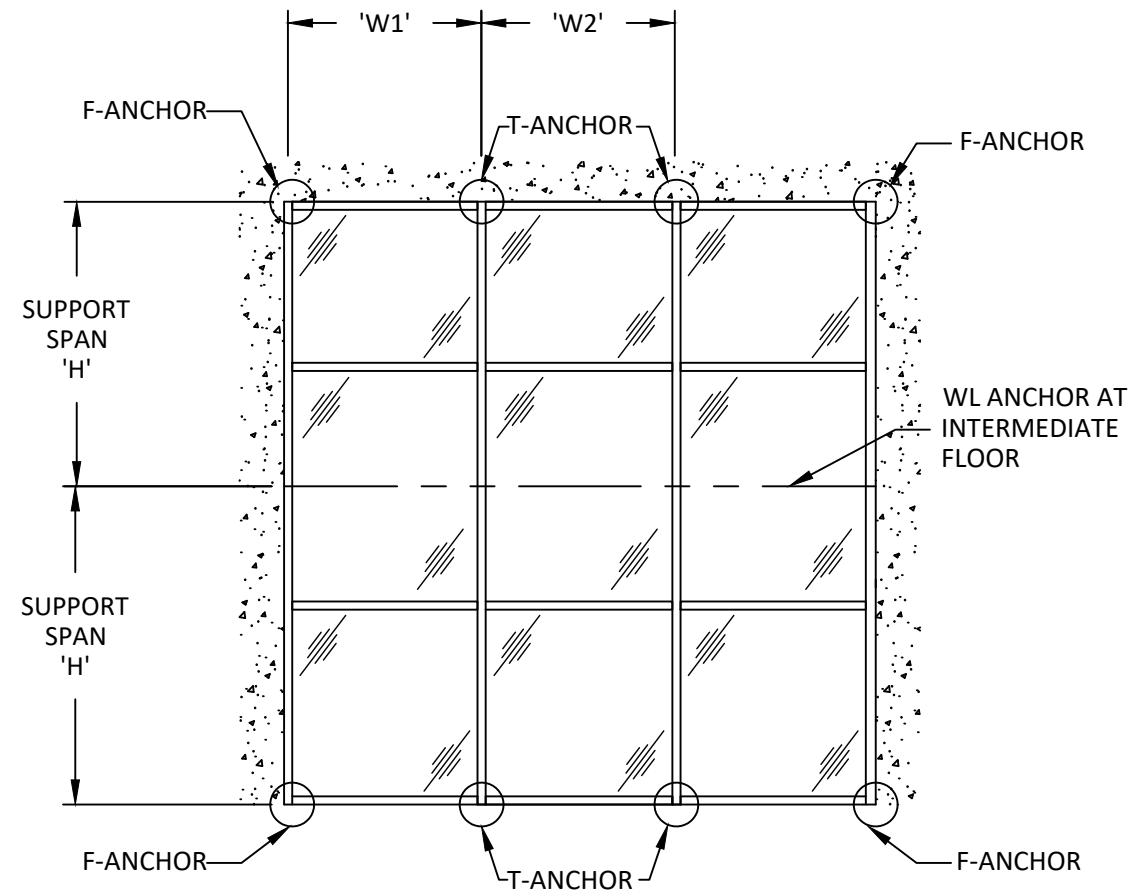
\* REFER TO SECTION 2 FOR ILLUSTRATION OF DETERMINING MAX. TRIBUTARY WIDTH

### NOTE:

1. ANCHORS SHALL BE INSTALLED IN ACCORDANCE WITH ANCHOR MANUFACTURER'S INSTALLATION INSTRUCTIONS.
2. REFER TO ANCHOR LAYOUTS AT RIGHT FOR LOCATIONS AND DETERMINING MAX. LENGTHS (L) AND TRIBUTARY WIDTHS (W).
3. FOR SITE CONDITIONS NOT SHOWN IN THE DETAILS HEREIN OR EDGE DISTANCE REQUIREMENTS TO BE MODIFIED, ANCHORS MAY BE ENGINEERED ON A SITE SPECIFIC BASIS.
4. REFER TO SECTION 7 FOR WIND/DEAD LOAD ANCHOR CONFIGURATIONS.
5. REFER TO SECTION 6 FOR T & F ANCHOR TYPE CAPACITIES.
6. FOR ANCHOR TYPE 'M', FINAL SELECTION OF HALFEN CAST IN CHANNEL & T-BOLTS SHALL BE VERIFIED BY HALFEN USA IN ACCORDANCE WITH SITE SPECIFIC LOADS PRIOR TO INSTALLATION.



**SINGLE SPAN ANCHOR LAYOUT**



**MULTI SPAN ANCHOR LAYOUT - TYP.**



ARCADIA, INC.  
2301 East Vernon Ave.  
Vernon, CA 90058  
(323)771-9819

TITLE: IP1900  
CURTAIN WALL SYSTEM  
(IMPACT)  
ANCHOR DETAILS

PREPARED BY: BUILDING DROPS, INC.  
398 E. DANIA BEACH BLVD., STE. 338  
DANIA BEACH, FL 33004  
PH: (954)399-8478  
FAX: (954)744-4738  
WEB: www.buildingdrops.com



REMARKS	BY	DATE

THE INSTALLATION DETAILS DESCRIBED HEREIN ARE GENERIC AND MAY NOT REFLECT ACTUAL CONDITIONS FOR A SPECIFIC SITE. IF SITE CONDITIONS CAUSE INSTALLATION TO DEVIATE FROM THE REQUIREMENTS DETAILED HEREIN, A LICENSED ENGINEER OR ARCHITECT SHALL PREPARE SITE SPECIFIC DOCUMENTS FOR USE WITH THIS DOCUMENT



HERMES F. NORERO, P.E.  
TEXAS P.E. No. 118471  
BUILDING DROPS, INC  
398 E. DANIA BEACH BLVD. # 338  
DANIA BEACH, FL 33004  
TBPE FIRM No. 13734

DATE: 05.10.22

DWG. BY: SH

CHK. BY: HFN

SCALE: NTS

DWG. #: ARC008

SECTION:

6.0



12/22/2022 4:00 PM  
 s:\projects\arcadia, inc\tdi-22-0358.1 - rdi submittal - ip1900 curtainwall system.dwg  
 ip1900 - curtain wall\arc008.dwg



ARCADIA, INC.  
 2301 East Vernon Ave.  
 Vernon, CA 90058  
 (323)771-9819

TITLE: IP1900  
 CURTAIN WALL SYSTEM  
 (IMPACT)  
 ANCHOR DETAILS

PREPARED BY:  
**BUILDING DROPS, INC.**  
 398 E. DANIA BEACH BLVD., STE. 338  
 DANIA BEACH, FL 33004  
 PH: (954)399-8478  
 FAX: (954)744-4738  
 WEB: www.buildingdrops.com



REMARKS	BY	DATE

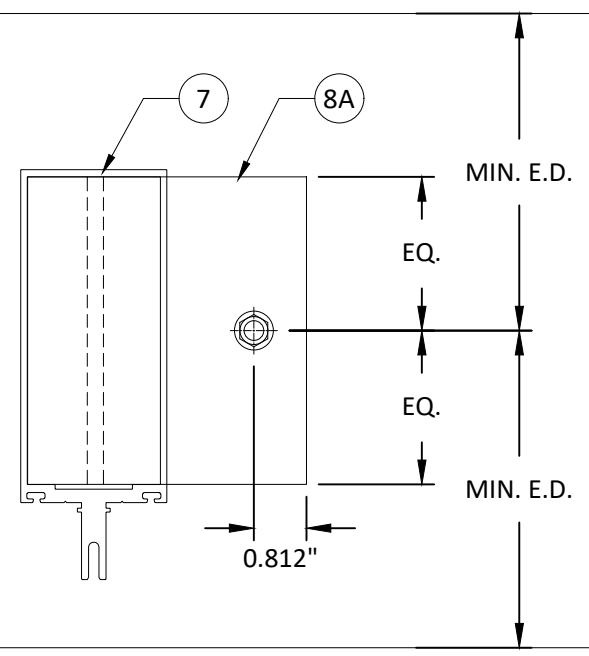
THE INSTALLATION DETAILS DESCRIBED HEREIN ARE GENERIC AND MAY NOT REFLECT ACTUAL CONDITIONS FOR A SPECIFIC SITE. IF SITE CONDITIONS CAUSE INSTALLATION TO DEVIATE FROM THE REQUIREMENTS DETAILED HEREIN, A LICENSED ENGINEER OR ARCHITECT SHALL PREPARE SITE SPECIFIC DOCUMENTS FOR USE WITH THIS DOCUMENT



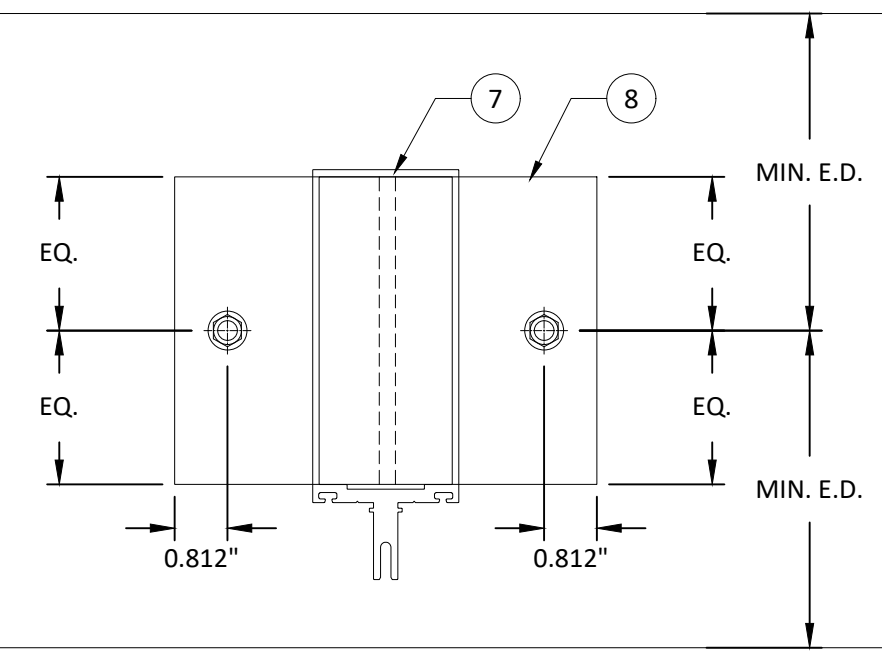
HERMES F. NORERO, P.E.  
 TEXAS P.E. No 118471  
 BUILDING DROPS, INC  
 398 E. DANIA BEACH BLVD. # 338  
 DANIA BEACH, FL 33004  
 TBPE FIRM No. 13734

DATE:	05.10.22
DWG. BY:	SH
CHK. BY:	HFN
SCALE:	NTS
DWG. #:	ARC008

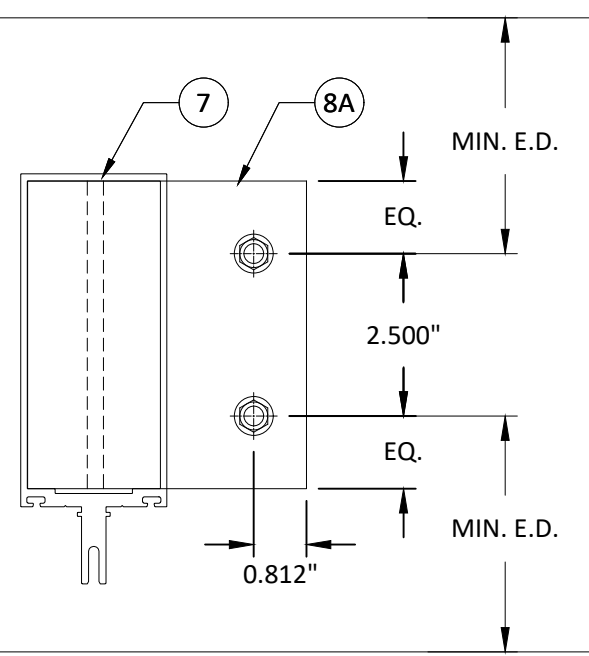
SECTION:  
**6.1**  
 Page 9 of 14



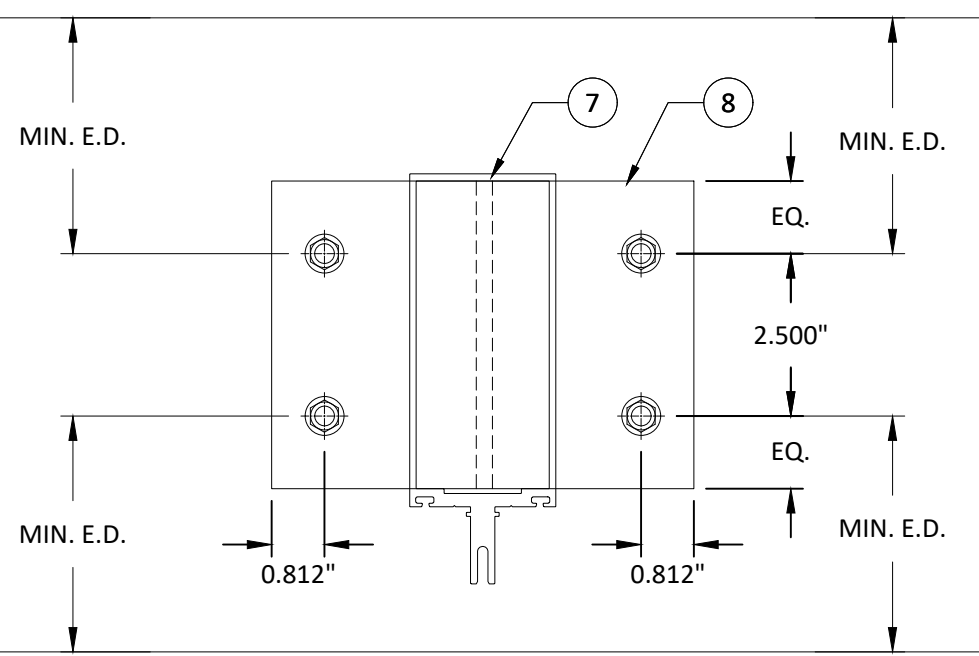
**1 HORIZONTAL SECTION**  
**6.1 F-ANCHOR CONFIG 1**



**2 HORIZONTAL SECTION**  
**6.1 T-ANCHOR CONFIG 1**



**3 HORIZONTAL SECTION**  
**6.1 F-ANCHOR CONFIG 2**



**4 HORIZONTAL SECTION**  
**6.1 T-ANCHOR CONFIG 2**

s:\projects\arcadia, inc\tdi-22-0358.1 - rdi submittal - ip1900 curtainwall system.dwg; ip1900 - curtain wall\arc008.dwg



ARCADIA, INC.  
2301 East Vernon Ave.  
Vernon, CA 90058  
(323)771-9819

TITLE: IP1900 CURTAIN WALL SYSTEM (IMPACT) ANCHOR DETAILS

PREPARED BY: BUILDING DROPS, INC.  
398 E. DANIA BEACH BLVD., STE. 338  
DANIA BEACH, FL 33004  
PH: (954)399-8478  
FAX: (954)744-4738  
WEB: www.buildingdrops.com

REMARKS	BY	DATE

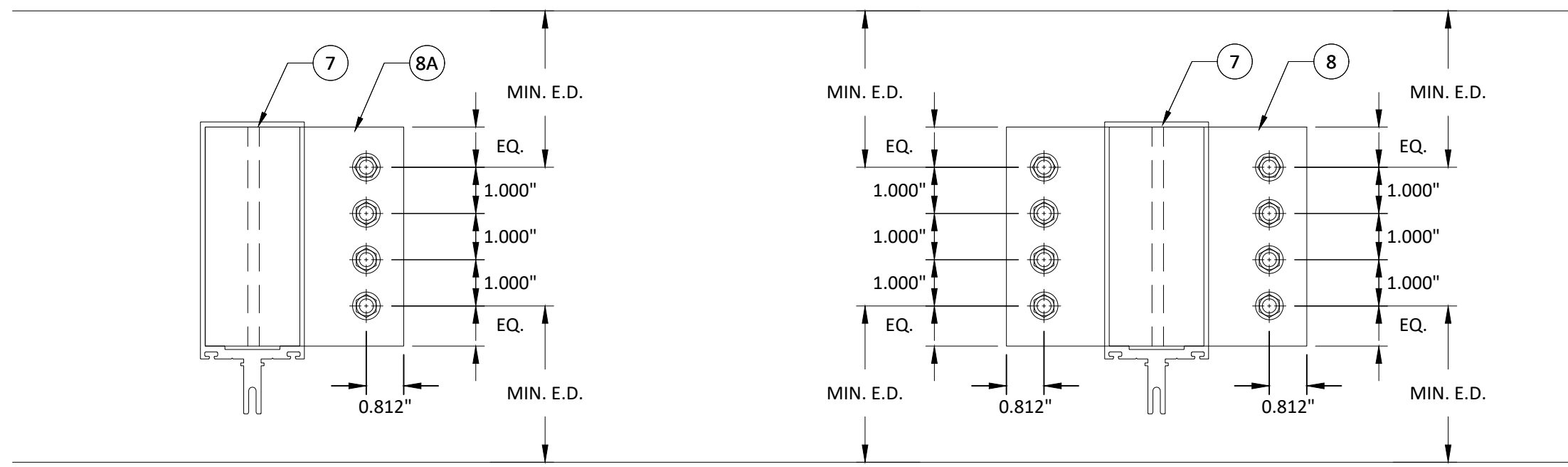
THE INSTALLATION DETAILS DESCRIBED HEREIN ARE GENERIC AND MAY NOT REFLECT ACTUAL CONDITIONS FOR A SPECIFIC SITE. IF SITE CONDITIONS CAUSE INSTALLATION TO DEVIATE FROM THE REQUIREMENTS DETAILED HEREIN, A LICENSED ENGINEER OR ARCHITECT SHALL PREPARE SITE SPECIFIC DOCUMENTS FOR USE WITH THIS DOCUMENT



HERMES F. NORERO, P.E.  
TEXAS P.E. No. 118471  
BUILDING DROPS, INC  
398 E. DANIA BEACH BLVD. # 338  
DANIA BEACH, FL 33004  
TBPE FIRM No. 13734

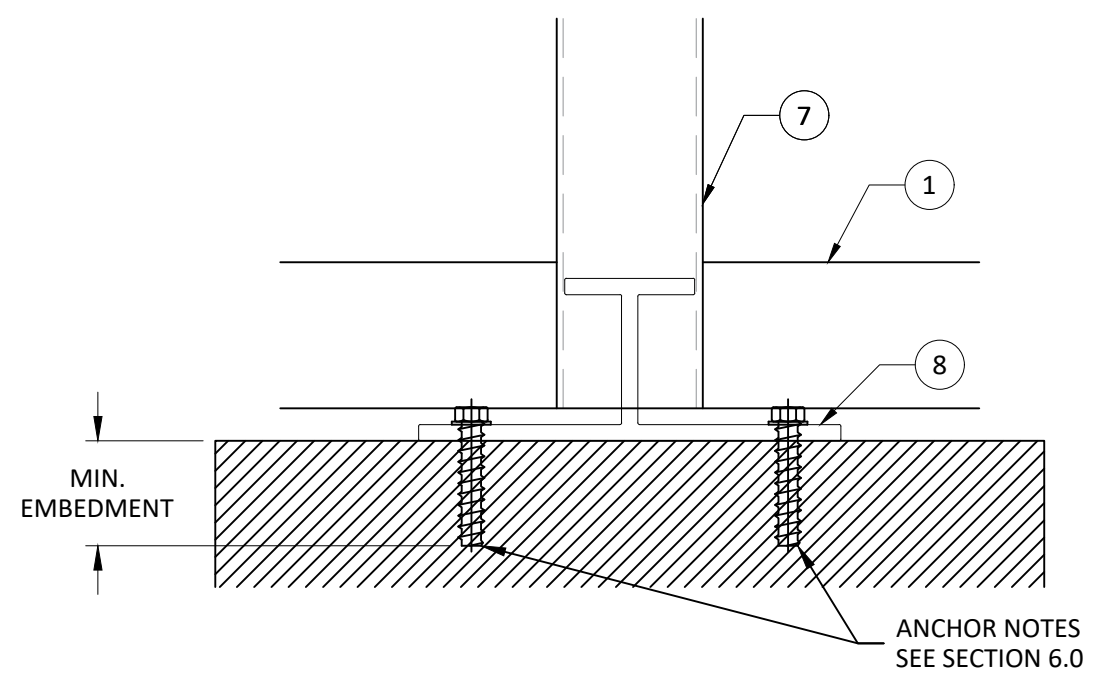
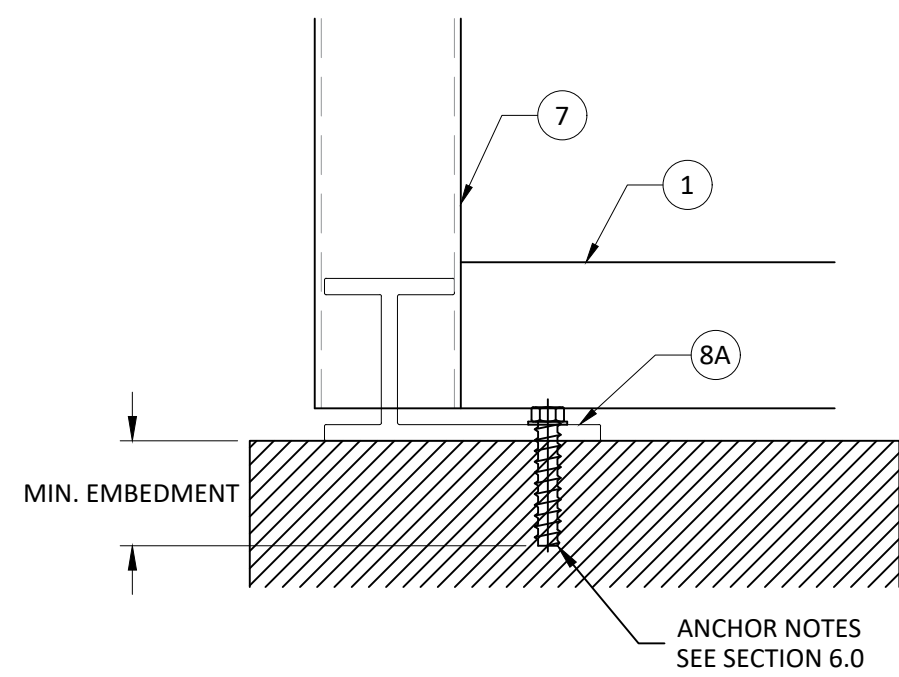
DATE:	05.10.22
DWG. BY:	SH
CHK. BY:	HFN
SCALE:	NTS
DWG. #:	ARC008

SECTION: 6.2  
Page 10 of 14



**5.2 HORIZONTAL SECTION**  
**6.2 F-ANCHOR CONFIG 3**

**6.2 HORIZONTAL SECTION**  
**6.2 T-ANCHOR CONFIG 3**



# F & T ANCHOR CAPACITY CHARTS



ARCADIA, INC.  
2301 East Vernon Ave.  
Vernon, CA 90058  
(323)771-9819

## ANCHOR LOAD CAPACITY - PSF

NOMINAL DIMS.		ANCHOR TYPE 'A'			ANCHOR TYPE 'B'		ANCHOR TYPE 'C'	ANCHOR TYPE 'D'		ANCHOR TYPE 'E'		ANCHOR TYPE 'F'	
TRIBUTARY WIDTH 'W' (in.)	FRAME HEIGHT 'H' (in.)	CONFIG. 1	CONFIG. 2	CONFIG. 3	CONFIG. 1	CONFIG. 2	CONFIG. 1	CONFIG. 1	CONFIG. 2	CONFIG. 1	CONFIG. 2	CONFIG. 1	CONFIG. 2
36	72	50.0	50.0	50.0	50.0	50.0	50.0	31.0	50.0	50.0	50.0	50.0	50.0
42		50.0	50.0	50.0	50.0	50.0	50.0	26.6	50.0	50.0	50.0	50.0	50.0
48		45.8	50.0	50.0	50.0	50.0	50.0	23.3	46.5	48.3	50.0	50.0	50.0
54		40.8	50.0	50.0	50.0	50.0	50.0	20.7	41.4	43.0	50.0	50.0	50.0
60		36.7	50.0	50.0	47.0	50.0	50.0	18.6	37.2	38.7	50.0	49.7	50.0
66		33.3	50.0	50.0	42.7	50.0	50.0	16.9	33.8	35.2	50.0	45.2	50.0
72		30.6	50.0	50.0	39.1	50.0	50.0	15.5	31.0	32.2	50.0	41.4	50.0
36	78	50.0	50.0	50.0	50.0	50.0	50.0	28.6	50.0	50.0	50.0	50.0	50.0
42		48.4	50.0	50.0	50.0	50.0	50.0	24.5	49.1	50.0	50.0	50.0	50.0
48		42.3	50.0	50.0	50.0	50.0	50.0	21.5	43.0	44.6	50.0	50.0	50.0
54		37.6	50.0	50.0	48.2	50.0	50.0	19.1	38.2	39.7	50.0	50.0	50.0
60		33.9	50.0	50.0	43.3	50.0	50.0	17.2	34.4	35.7	50.0	45.9	50.0
66		30.8	50.0	50.0	39.4	50.0	50.0	15.6	31.2	32.4	50.0	41.7	50.0
72		28.2	50.0	50.0	36.1	50.0	50.0	14.3	28.6	29.7	50.0	38.3	50.0
36	84	50.0	50.0	50.0	50.0	50.0	50.0	26.6	50.0	50.0	50.0	50.0	50.0
42		44.9	50.0	50.0	50.0	50.0	50.0	22.8	45.6	47.3	50.0	50.0	50.0
48		39.3	50.0	50.0	50.0	50.0	50.0	19.9	39.9	41.4	50.0	50.0	50.0
54		34.9	50.0	50.0	44.7	50.0	50.0	17.7	35.5	36.8	50.0	47.4	50.0
60		31.4	50.0	50.0	40.2	50.0	50.0	16.0	31.9	33.1	50.0	42.6	50.0
66		28.6	50.0	50.0	36.6	50.0	50.0	14.5	29.0	30.1	50.0	38.8	50.0
72		26.2	50.0	50.0	33.5	50.0	50.0	13.3	26.6	27.6	50.0	35.5	50.0
36	90	48.9	50.0	50.0	50.0	50.0	50.0	24.8	49.6	50.0	50.0	50.0	50.0
42		41.9	50.0	50.0	50.0	50.0	50.0	21.3	42.5	44.2	50.0	50.0	50.0
48		36.7	50.0	50.0	47.0	50.0	50.0	18.6	37.2	38.7	50.0	49.7	50.0
54		32.6	50.0	50.0	41.7	50.0	50.0	16.5	33.1	34.4	50.0	44.2	50.0
60		29.3	50.0	50.0	37.6	50.0	50.0	14.9	29.8	30.9	50.0	39.8	50.0
66		26.7	50.0	50.0	34.2	50.0	50.0	13.5	27.1	28.1	50.0	36.2	50.0
72		24.5	48.9	50.0	31.3	50.0	50.0	12.4	24.8	25.8	50.0	33.2	50.0
36	96	45.8	50.0	50.0	50.0	50.0	50.0	23.3	46.5	48.3	50.0	50.0	50.0
42		39.3	50.0	50.0	50.0	50.0	50.0	19.9	39.9	41.4	50.0	50.0	50.0
48		34.4	50.0	50.0	44.0	50.0	50.0	17.5	34.9	36.3	50.0	46.6	50.0
54		30.6	50.0	50.0	39.1	50.0	50.0	15.5	31.0	32.2	50.0	41.4	50.0
60		27.5	50.0	50.0	35.2	50.0	50.0	14.0	27.9	29.0	50.0	37.3	50.0
66		25.0	50.0	50.0	32.0	50.0	50.0	12.7	25.4	26.4	50.0	33.9	50.0
72		22.9	45.8	50.0	29.3	50.0	50.0	11.6	23.3	24.2	48.3	31.1	50.0

TITLE: IP1900 CURTAIN WALL SYSTEM (IMPACT) ANCHOR LOAD CAPACITY

PREPARED BY: BUILDING DROPS, INC.  
398 E. DANIA BEACH BLVD., STE. 338  
DANIA BEACH, FL 33004  
PH: (954)399-8478  
FAX: (954)744-4738  
WEB: www.buildingdrops.com



REMARKS	BY	DATE

THE INSTALLATION DETAILS DESCRIBED HEREIN ARE GENERIC AND MAY NOT REFLECT ACTUAL CONDITIONS FOR A SPECIFIC SITE. IF SITE CONDITIONS CAUSE INSTALLATION TO DEVIATE FROM THE REQUIREMENTS DETAILED HEREIN, A LICENSED ENGINEER OR ARCHITECT SHALL PREPARE SITE SPECIFIC DOCUMENTS FOR USE WITH THIS DOCUMENT



HERMES F. NORERO, P.E.  
TEXAS P.E. No. 118471  
BUILDING DROPS, INC  
398 E. DANIA BEACH BLVD. # 338  
DANIA BEACH, FL 33004  
TBPE FIRM No. 13734

DATE: 05.10.22

DWG. BY: SH      CHK. BY: HFN

SCALE: NTS

DWG. #: ARC008

SECTION:

6.3

# F & T ANCHOR CAPACITY CHARTS (CONT.)



ARCADIA, INC.  
2301 East Vernon Ave.  
Vernon, CA 90058  
(323)771-9819

## ANCHOR LOAD CAPACITY - PSF

NOMINAL DIMS.		ANCHOR TYPE 'A'			ANCHOR TYPE 'B'		ANCHOR TYPE 'C'	ANCHOR TYPE 'D'		ANCHOR TYPE 'E'		ANCHOR TYPE 'F'	
TRIBUTARY WIDTH 'W' (in.)	FRAME HEIGHT 'H' (in.)	CONFIG. 1	CONFIG. 2	CONFIG. 3	CONFIG. 1	CONFIG. 2	CONFIG. 1	CONFIG. 1	CONFIG. 2	CONFIG. 1	CONFIG. 2	CONFIG. 1	CONFIG. 2
36	102	43.2	50.0	50.0	50.0	50.0	50.0	21.9	43.8	45.5	50.0	50.0	50.0
42		37.0	50.0	50.0	47.4	50.0	50.0	18.8	37.5	39.0	50.0	50.0	50.0
48		32.4	50.0	50.0	41.4	50.0	50.0	16.4	32.8	34.1	50.0	43.9	50.0
54		28.8	50.0	50.0	36.8	50.0	50.0	14.6	29.2	30.3	50.0	39.0	50.0
60		25.9	50.0	50.0	33.1	50.0	50.0	13.1	26.3	27.3	50.0	35.1	50.0
66		23.5	47.1	50.0	30.1	50.0	50.0	11.9	23.9	24.8	49.6	31.9	50.0
36	108	40.8	50.0	50.0	50.0	50.0	50.0	20.7	41.4	43.0	50.0	50.0	50.0
42		34.9	50.0	50.0	44.7	50.0	50.0	17.7	35.5	36.8	50.0	47.4	50.0
48		30.6	50.0	50.0	39.1	50.0	50.0	15.5	31.0	32.2	50.0	41.4	50.0
54		27.2	50.0	50.0	34.8	50.0	50.0	13.8	27.6	28.6	50.0	36.8	50.0
60		24.5	48.9	50.0	31.3	50.0	50.0	12.4	24.8	25.8	50.0	33.2	50.0
36	114	38.6	50.0	50.0	49.4	50.0	50.0	19.6	39.2	40.7	50.0	50.0	50.0
42		33.1	50.0	50.0	42.4	50.0	50.0	16.8	33.6	34.9	50.0	44.9	50.0
48		29.0	50.0	50.0	37.1	50.0	50.0	14.7	29.4	30.5	50.0	39.3	50.0
54		25.7	50.0	50.0	33.0	50.0	50.0	13.1	26.1	27.1	50.0	34.9	50.0
60	120	23.2	46.3	50.0	29.7	50.0	50.0	11.8	23.5	24.4	48.8	31.4	50.0
36		36.7	50.0	50.0	47.0	50.0	50.0	18.6	37.2	38.7	50.0	49.7	50.0
42		31.4	50.0	50.0	40.2	50.0	50.0	16.0	31.9	33.1	50.0	42.6	50.0
48		27.5	50.0	50.0	35.2	50.0	50.0	14.0	27.9	29.0	50.0	37.3	50.0
54	24.5	48.9	50.0	31.3	50.0	50.0	12.4	24.8	25.8	50.0	33.2	50.0	
36	126	34.9	50.0	50.0	44.7	50.0	50.0	17.7	35.5	36.8	50.0	47.4	50.0
42		29.9	50.0	50.0	38.3	50.0	50.0	15.2	30.4	31.6	50.0	40.6	50.0
48		26.2	50.0	50.0	33.5	50.0	50.0	13.3	26.6	27.6	50.0	35.5	50.0
54	23.3	46.6	50.0	29.8	50.0	50.0	11.8	23.6	24.6	49.1	31.6	50.0	
36	132	33.3	50.0	50.0	42.7	50.0	50.0	16.9	33.8	35.2	50.0	45.2	50.0
42		28.6	50.0	50.0	36.6	50.0	50.0	14.5	29.0	30.1	50.0	38.8	50.0
48		25.0	50.0	50.0	32.0	50.0	50.0	12.7	25.4	26.4	50.0	33.9	50.0
36	138	31.9	50.0	50.0	40.8	50.0	50.0	16.2	32.4	33.6	50.0	43.2	50.0
42		27.3	50.0	50.0	35.0	50.0	50.0	13.9	27.7	28.8	50.0	37.1	50.0
48		23.9	47.8	50.0	30.6	50.0	50.0	12.1	24.3	25.2	50.0	32.4	50.0
36	144	30.6	50.0	50.0	39.1	50.0	50.0	15.5	31.0	32.2	50.0	41.4	50.0
42		26.2	50.0	50.0	33.5	50.0	50.0	13.3	26.6	27.6	50.0	35.5	50.0
48		22.9	45.8	50.0	29.3	50.0	50.0	11.6	23.3	24.2	48.3	31.1	50.0
36	150	29.3	50.0	50.0	37.6	50.0	50.0	14.9	29.8	30.9	50.0	39.8	50.0
42		25.2	50.0	50.0	32.2	50.0	50.0	12.8	25.5	26.5	50.0	34.1	50.0
36	156	28.2	50.0	50.0	36.1	50.0	50.0	14.3	28.6	29.7	50.0	38.3	50.0
42		24.2	48.4	50.0	31.0	50.0	50.0	12.3	24.5	25.5	50.0	32.8	50.0

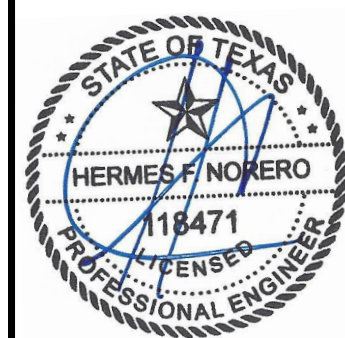
TITLE: IP1900 CURTAIN WALL SYSTEM (IMPACT) ANCHOR LOAD CHARTS

PREPARED BY: BUILDING DROPS, INC.  
398 E. DANIA BEACH BLVD., STE. 338  
DANIA BEACH, FL 33004  
PH: (954)399-8478  
FAX: (954)744-4738  
WEB: www.buildingdrops.com



REMARKS	BY	DATE

THE INSTALLATION DETAILS DESCRIBED HEREIN ARE GENERIC AND MAY NOT REFLECT ACTUAL CONDITIONS FOR A SPECIFIC SITE. IF SITE CONDITIONS CAUSE INSTALLATION TO DEVIATE FROM THE REQUIREMENTS DETAILED HEREIN, A LICENSED ENGINEER OR ARCHITECT SHALL PREPARE SITE SPECIFIC DOCUMENTS FOR USE WITH THIS DOCUMENT



HERMES F. NORERO, P.E.  
TEXAS P.E. No. 118471  
BUILDING DROPS, INC  
398 E. DANIA BEACH BLVD. # 338  
DANIA BEACH, FL 33004  
TBPE FIRM No. 13734

DATE: 05.10.22

DWG. BY: SH      CHK. BY: HFN

SCALE: NTS

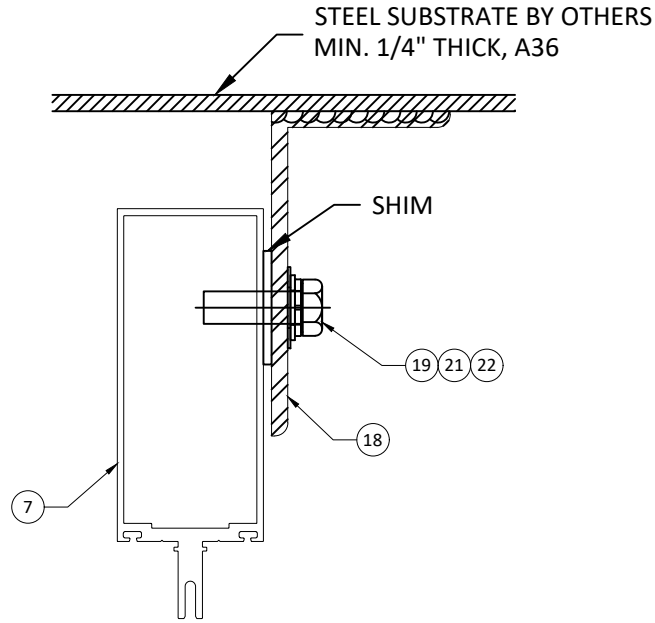
DWG. #: ARC008

SECTION:

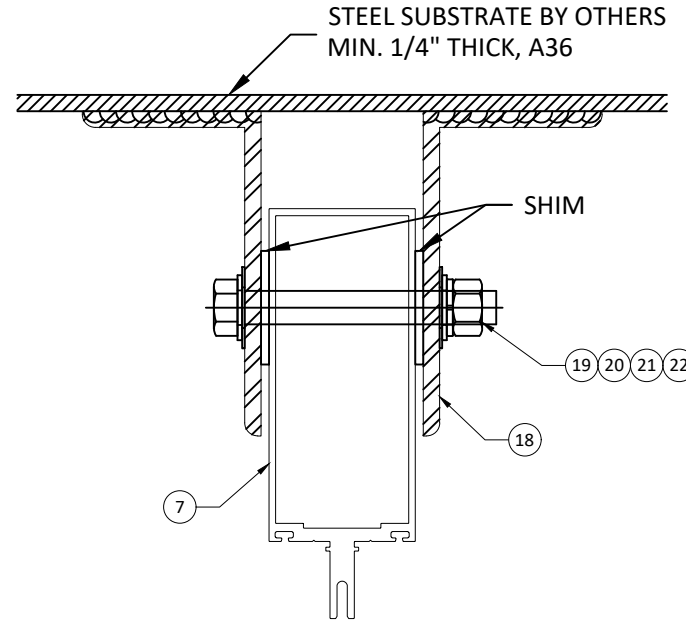
6.4



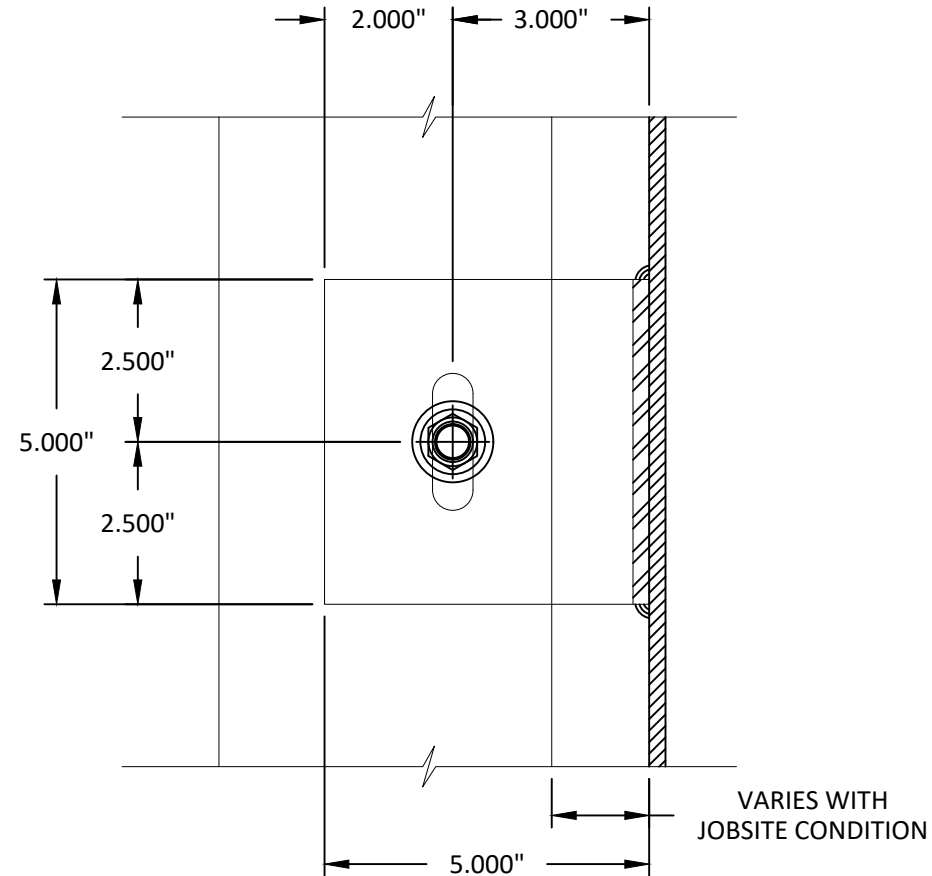
12/22/2022 4:00 PM



**1**  
**7.0**  
**ANCHOR DETAIL**  
WIND LOAD ANCHOR  
AT JAMB



**2**  
**7.0**  
**ANCHOR DETAIL**  
WIND LOAD ANCHOR  
AT INTERMEDIATE MULLION



**ANCHOR DETAIL**  
WIND LOAD ANCHOR  
AT STEEL SUBSTRATE

WIND LOAD ANCHOR CAPACITY		
TRIBUTARY WIDTH 'W' (IN)	SPAN 'H' (IN)	MAX. DESIGN PRESSURE (PSF)
48	144	+/- 50



ARCADIA, INC.  
2301 East Vernon Ave.  
Vernon, CA 90058  
(323)771-9819

TITLE: IP1900  
CURTAIN WALL SYSTEM  
(IMPACT)  
WIND LOAD ANCHOR

PREPARED BY:  
**BUILDING DROPS, INC.**  
398 E. DANIA BEACH BLVD., STE. 338  
DANIA BEACH, FL 33004  
PH: (954)399-8478  
FAX: (954)744-4738  
WEB: www.buildingdrops.com



REMARKS	BY	DATE

THE INSTALLATION DETAILS DESCRIBED HEREIN ARE GENERIC AND MAY NOT REFLECT ACTUAL CONDITIONS FOR A SPECIFIC SITE. IF SITE CONDITIONS CAUSE INSTALLATION TO DEVIATE FROM THE REQUIREMENTS DETAILED HEREIN, A LICENSED ENGINEER OR ARCHITECT SHALL PREPARE SITE SPECIFIC DOCUMENTS FOR USE WITH THIS DOCUMENT



HERMES F. NORERO, P.E.  
TEXAS P.E. No. 118471  
BUILDING DROPS, INC  
398 E. DANIA BEACH BLVD. # 338  
DANIA BEACH, FL 33004  
TBPE FIRM No. 13734

DATE: **05.10.22**  
DWG. BY: **SH**      CHK. BY: **HFN**  
SCALE: **NTS**  
DWG. #: **ARC008**

SECTION:  
**7.0**

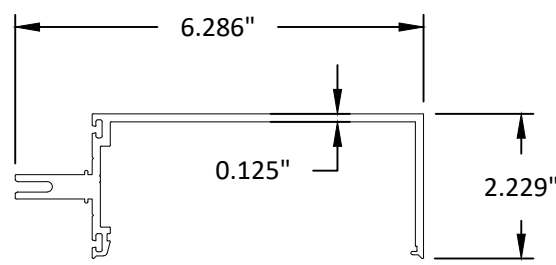
s:\projects\arcadia\_incl\tdi-22-0358.1 - rdi submittal - ip1900 curtainwall system.dwg; ip1900 - storefront system and ip1900 storefront system.dwg; ip1900 - curtain wall\arc008.dwg

12/22/2022 4:00 PM  
s:\projects\arcadia\_incl\tdi-22-0358.1 - tdi\_submittal - ip1900\_curtainwall\_system.dwg  
s:\projects\arcadia\_incl\tdi-22-0358.1 - tdi\_submittal - ip1900\_curtainwall\_system.dwg

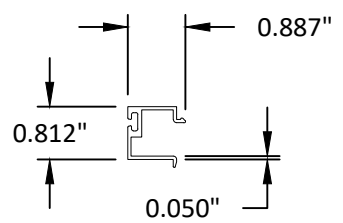
## BILL OF MATERIALS

ITEM	PART No.	DESCRIPTION	MATERIAL
1	OPG-1978	HEAD & SILL	6063-T6
2	OPG-1989	ADAPTOR	6063-T6
3	OPG-0299	PRESURE PLATE	6063-T6
4	OPG-1912	STANDARD COVER	6063-T6
5	OPG-1901	SNAP INTERIOR COVER	6063-T6
6	OPG-1999.4	CLIP	6063-T6
7	OPG-1910	VERTICAL / HORIZONTAL / JAMB	6063-T6
8	OPG-1551	I-CLIP (@ INTERMEDIATE)	6063-T6
8A	OPG-1551	F-CLIP (@ JAMB)	6063-T6
9	OPG-0292	PRESSURE PLATE	6063-T6
10		#12 x 1/2" FLAT HEAD S.M.S.	
10A		#12 x 1/2" PAN HEAD S.M.S.	
10B		#10 x 1" FLAT HEAD S.M.S.	
11	OPG2087HS	#12 x 7/8" H.W.H. THREAD-CUTTING	6063-T6
12		ANTI-WALK BLOCKS @ 1/4 POINTS	6063-T6
13	OPG-1299	GASKET	NYLON
14		SETTING BLOCK (5/16" x 1 5/16 x 4"	
15	OPG-1986	PRESSURE PLATE ISOLATOR	
16	OPG-1900	HORIZONTAL	6063-T6
17	OPGUCH.3	CLIP	6063-T6
18		WIND LOAD ANCHOR	STEEL
19		1/2"-13 BOLT	STEEL
20		1/2"-13 NUT	STEEL
21		1/2" LOCK WASHER	STEEL
22		1/2" FLAT WASHER	STEEL

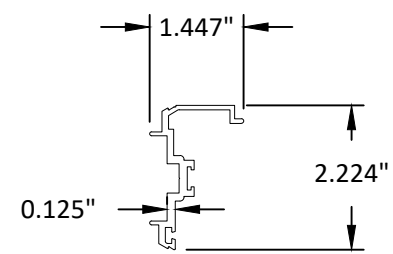
**1** HEAD & SILL



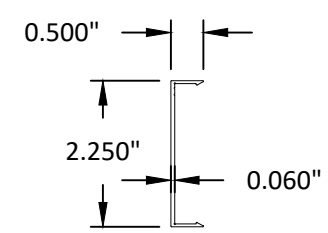
**2** ADAPTOR



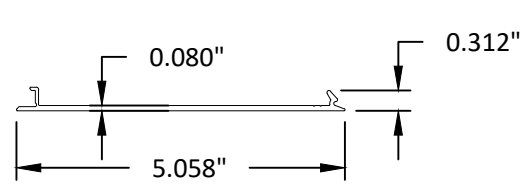
**3** PRESURE PLATE



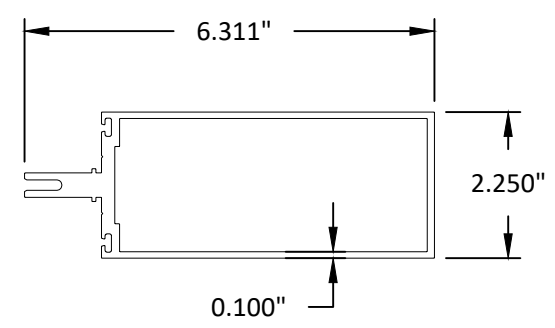
**4** STANDARD COVER



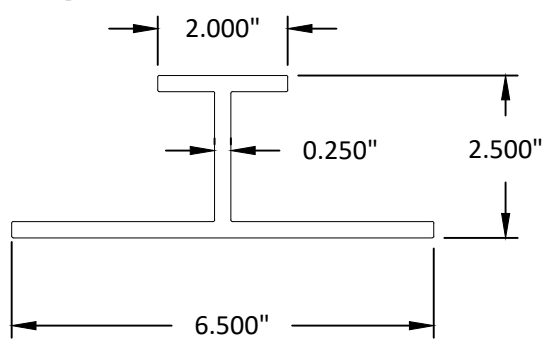
**5** SNAP INTERIOR COVER



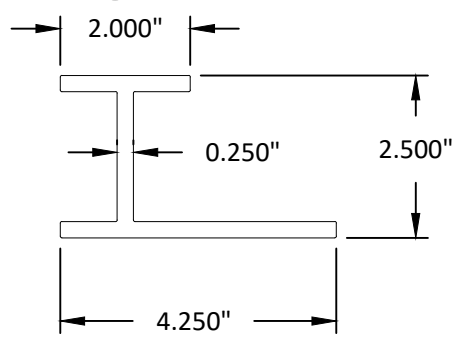
**7** VERTICAL / HORIZONTAL / JAMB



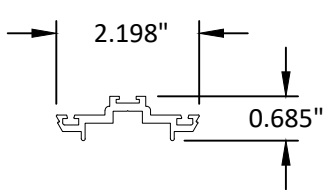
**8** I-CLIP (@ INTERMEDIATE)



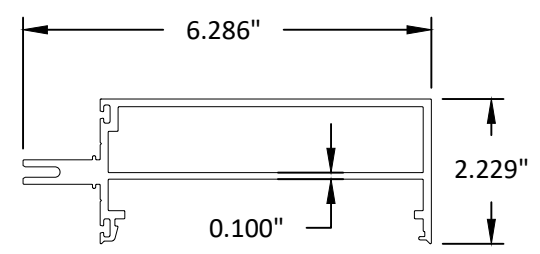
**8A** F-CLIP (@ JAMB)



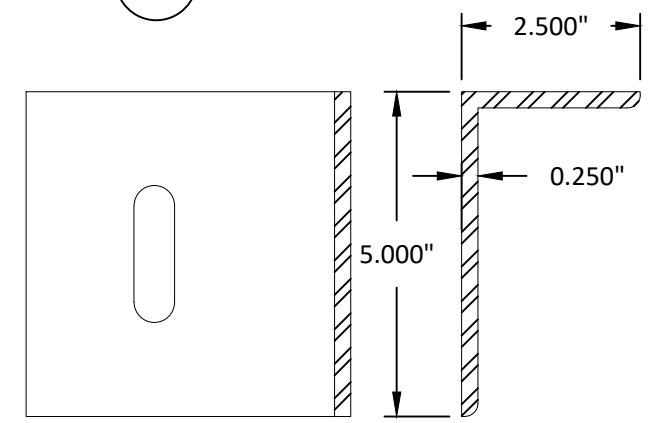
**9** PRESSURE PLATE



**16** HORIZONTAL



**18** WIND LOAD ANCHOR



**arcadia**  
ARCADIA, INC.  
2301 East Vernon Ave.  
Vernon, CA 90058  
(323)771-9819

TITLE: IP1900 CURTAIN WALL SYSTEM (IMPACT) COMPONENTS & BILL OF MATERIALS

PREPARED BY: BUILDING DROPS, INC.  
398 E. DANIA BEACH BLVD., STE. 338  
DANIA BEACH, FL 33004  
PH: (954)399-8478  
FAX: (954)744-4738  
WEB: www.buildingdrops.com

REMARKS	BY	DATE

THE INSTALLATION DETAILS DESCRIBED HEREIN ARE GENERIC AND MAY NOT REFLECT ACTUAL CONDITIONS FOR A SPECIFIC SITE. IF SITE CONDITIONS CAUSE INSTALLATION TO DEVIATE FROM THE REQUIREMENTS DETAILED HEREIN, A LICENSED ENGINEER OR ARCHITECT SHALL PREPARE SITE SPECIFIC DOCUMENTS FOR USE WITH THIS DOCUMENT



HERMES F. NORERO, P.E.  
TEXAS P.E. No 118471  
BUILDING DROPS, INC  
398 E. DANIA BEACH BLVD. # 338  
DANIA BEACH, FL 33004  
TBPE FIRM No. 13734

DATE:	05.10.22	
DWG. BY:	SH	CHK. BY: HFN
SCALE:	NTS	
DWG. #:	ARC008	

SECTION: 8.0  
Page 14 of 14